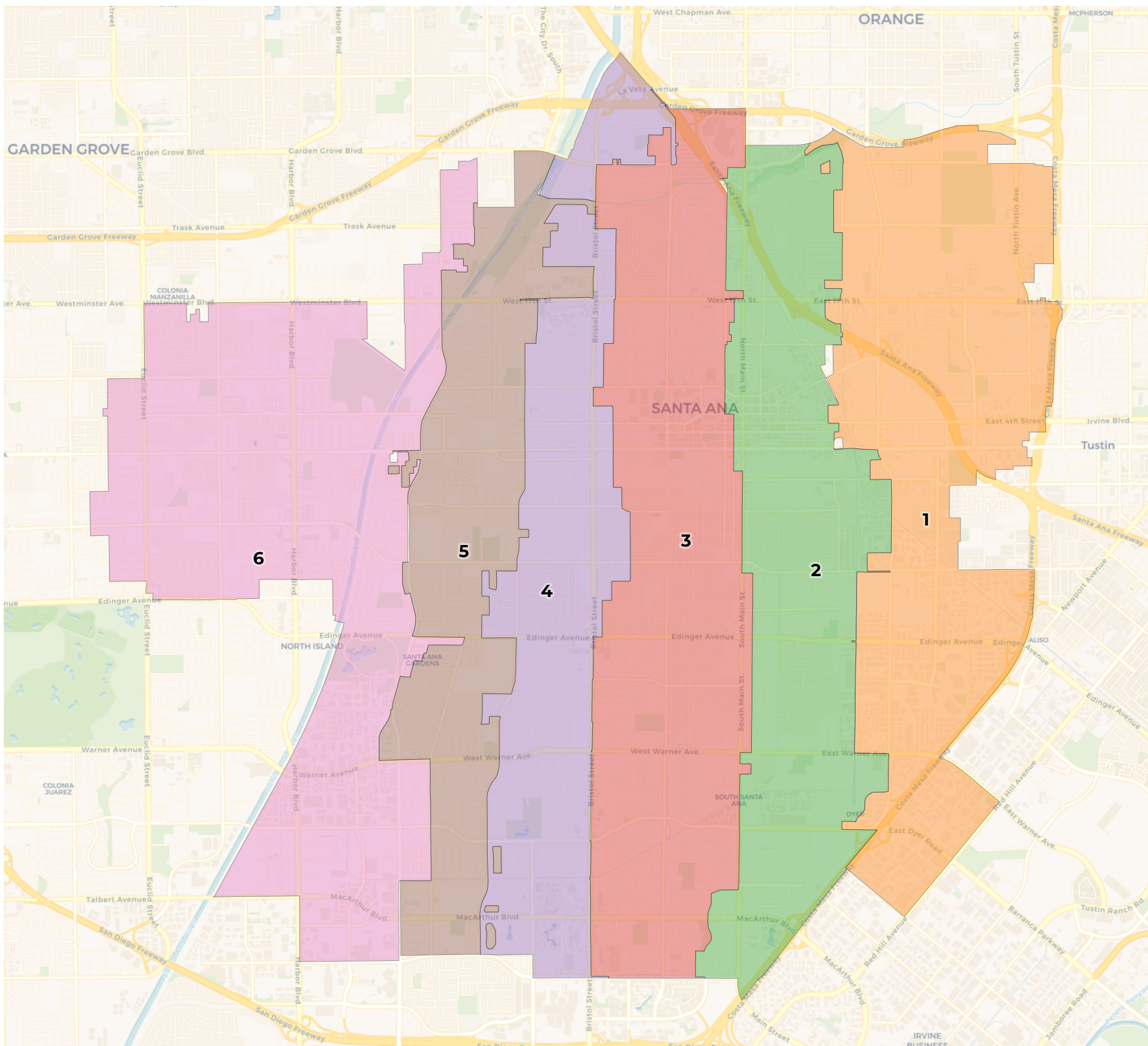


# City of Santa Ana

86638

# REDISTRICTING PARTNERS



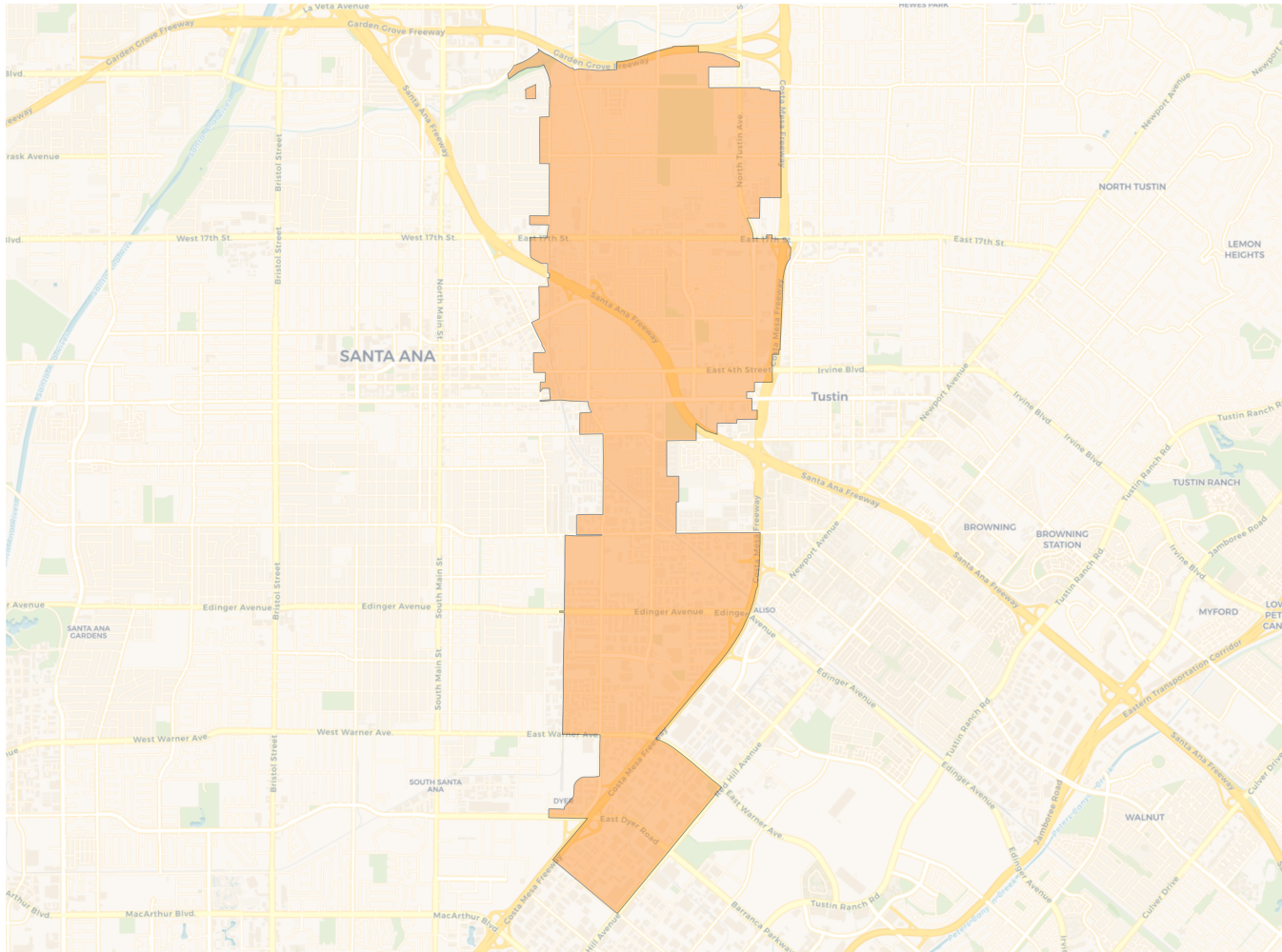
**2020 Census**

	1	2	3	4	5	6
Population	32,508	54,140	72,226	46,632	44,269	61,142
Deviation	-19,312	2,320	20,406	-5,188	-7,551	9,322
Deviation %	-37.3%	4.5%	39.4%	-10.0%	-14.6%	18.0%
Other	6,212	5,180	8,891	4,429	3,155	4,302
Other %	19.1%	9.6%	12.3%	9.5%	7.1%	7.0%
Latino	23,909	45,952	58,095	37,328	36,235	36,979
Latino %	73.5%	84.9%	80.4%	80.0%	81.9%	60.5%
Asian	1,980	2,654	4,481	4,374	4,510	19,439
Asian %	6.1%	4.9%	6.2%	9.4%	10.2%	31.8%
Black	407	354	759	501	369	422
Black %	1.3%	0.7%	1.1%	1.1%	0.8%	0.7%

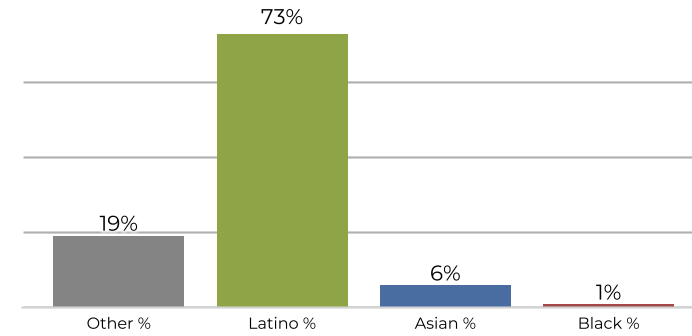
**Citizen Voting Age Population (CVAP)**

	1	2	3	4	5	6
Total CVAP	16,893	22,642	35,670	23,787	21,009	34,008
Other CVAP	6,715	4,182	7,928	4,461	3,013	4,176
Other CVAP %	39.8%	18.5%	22.2%	18.8%	14.3%	12.3%
Latino CVAP	8,465	16,269	23,957	15,954	14,109	15,939
Latino CVAP %	50.1%	71.9%	67.2%	67.1%	67.2%	46.9%
Asian CVAP	1,239	1,842	3,204	3,023	3,498	13,651
Asian CVAP %	7.3%	8.1%	9.0%	12.7%	16.6%	40.1%
Black CVAP	474	348	581	348	390	241
Black CVAP %	2.8%	1.5%	1.6%	1.5%	1.9%	0.7%

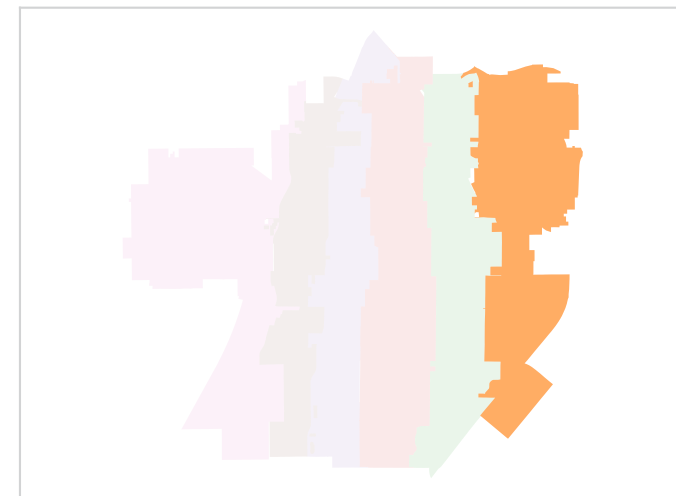
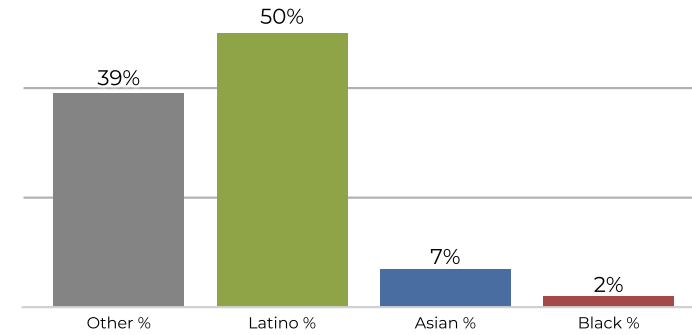
**District 1**



**2020 Census**

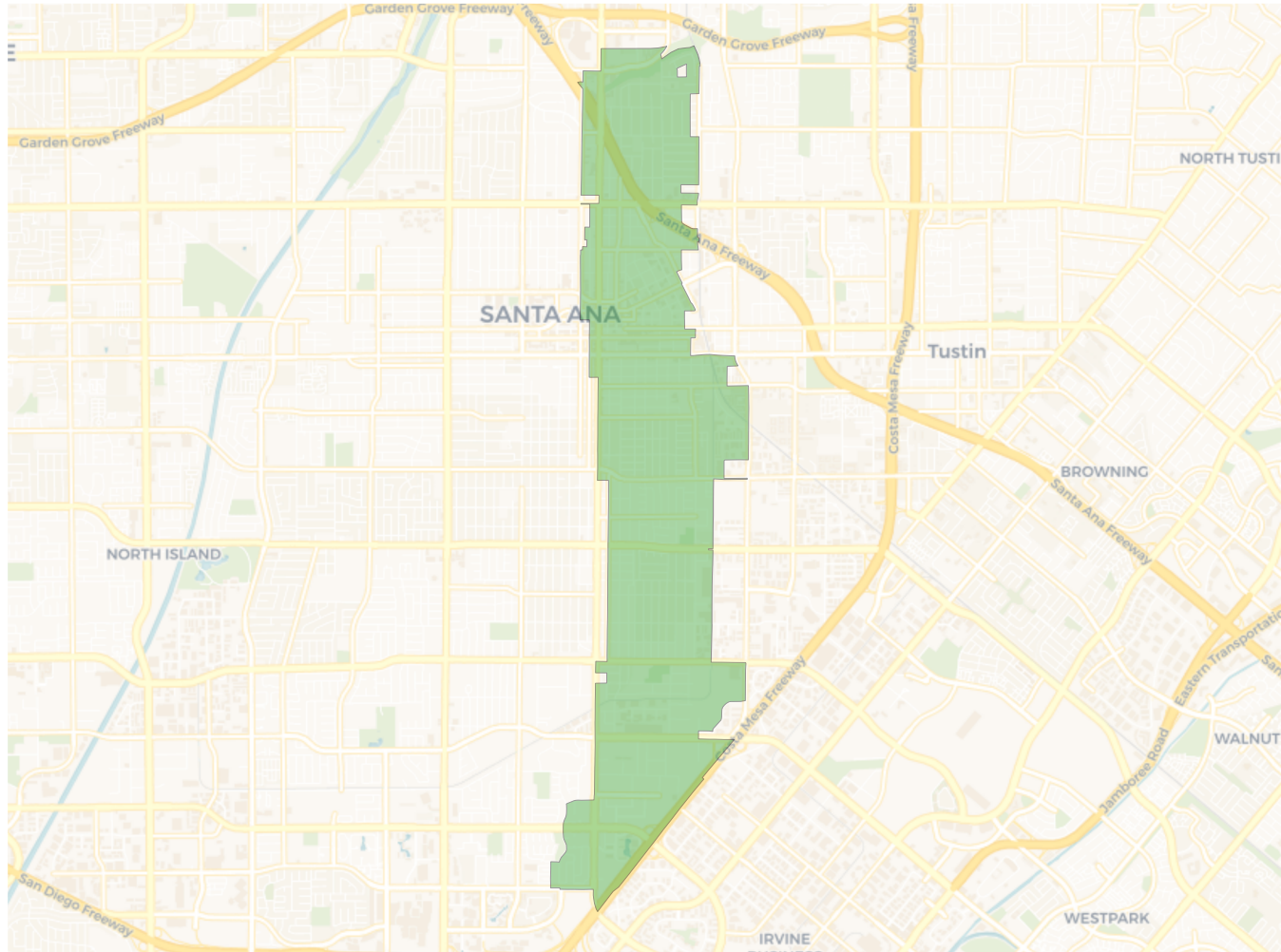


**Citizen Voting Age Population**

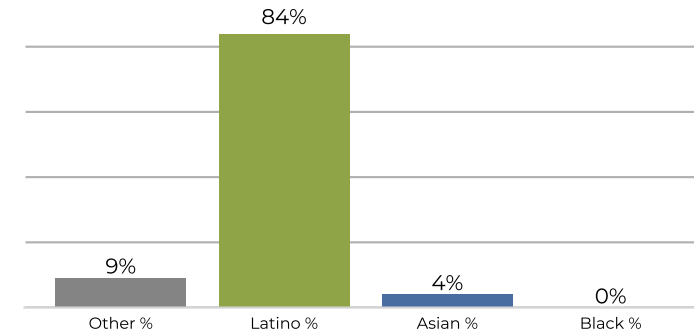


Population	Deviation	Deviation %	Other	Other %	Latino	Latino %	Asian	Asian %	Black	Black %
32,508	-19,312	-37.3%	6,212	19.1%	23,909	73.5%	1,980	6.1%	407	1.3%
Total CVAP	Other CVAP	Other CVAP %	Latino CVAP	Latino CVAP %	Asian CVAP	Asian CVAP %	Black CVAP	Black CVAP %		
16,893	6,715	39.8%	8,465	50.1%	1,239	7.3%	474	2.8%		

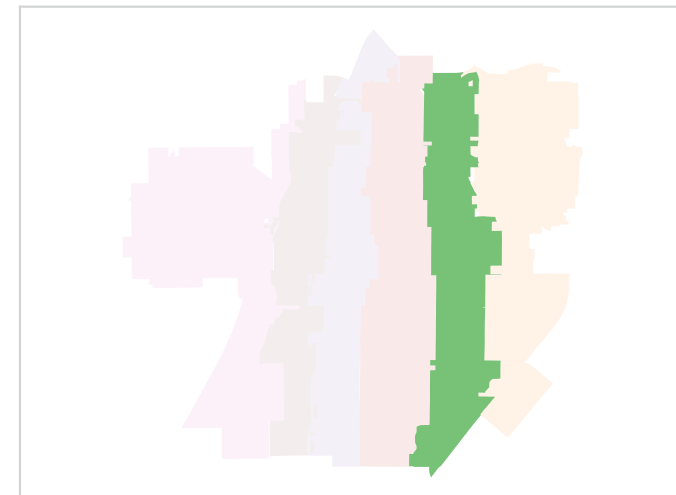
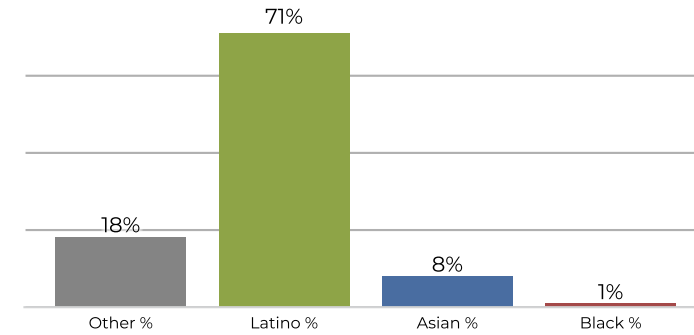
**District 2**



**2020 Census**

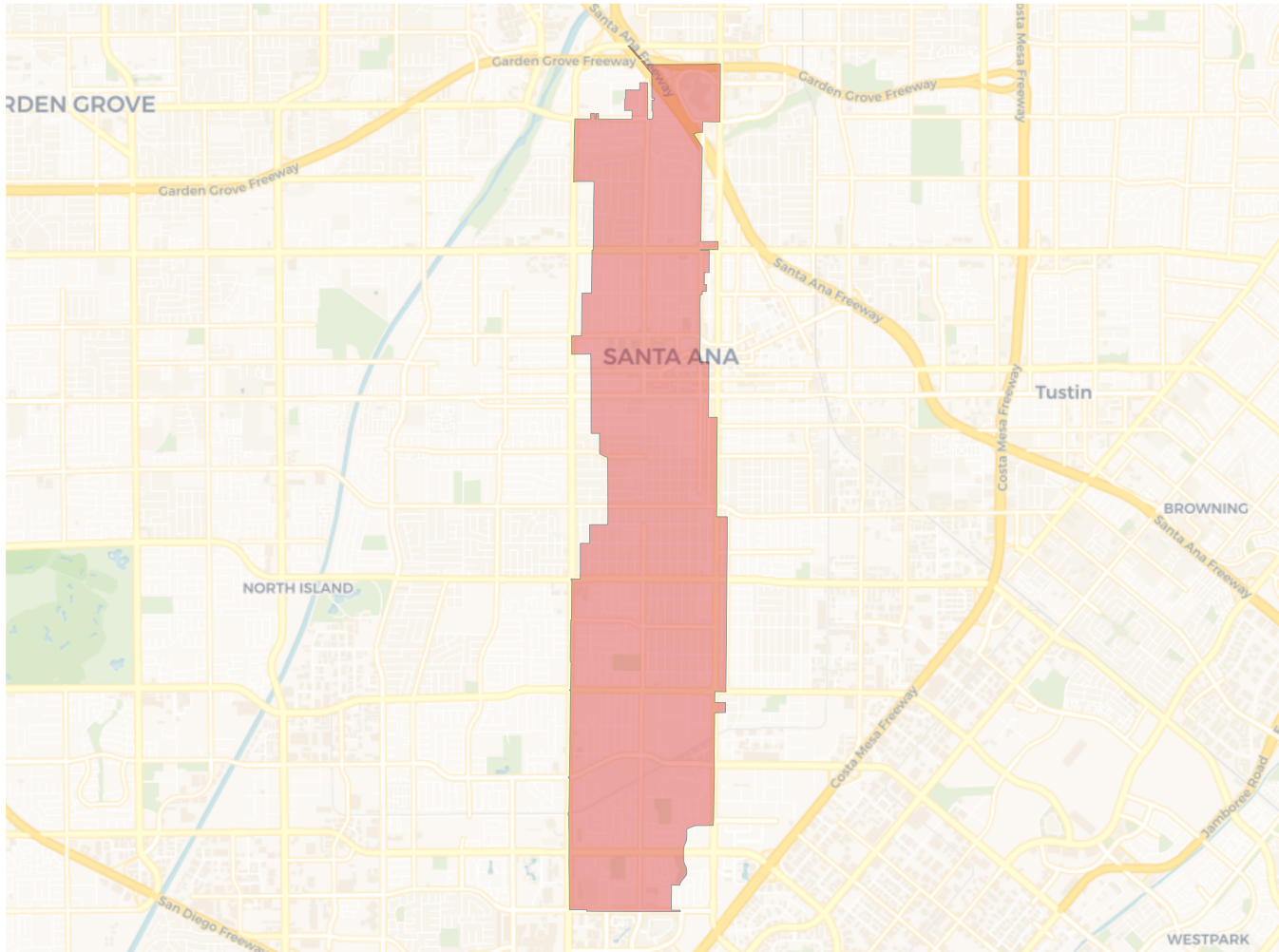


**Citizen Voting Age Population**

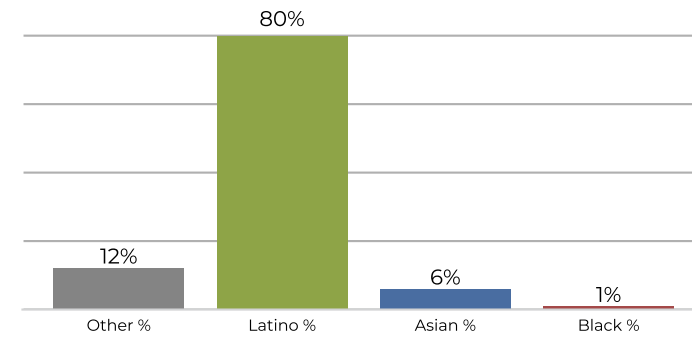


Population	Deviation	Deviation %	Other	Other %	Latino	Latino %	Asian	Asian %	Black	Black %
54,140	2,320	4.5%	5,180	9.6%	45,952	84.9%	2,654	4.9%	354	0.7%
Total CVAP	Other CVAP	Other CVAP %	Latino CVAP	Latino CVAP %	Asian CVAP	Asian CVAP %	Black CVAP	Black CVAP %		
22,642	4,182	18.5%	16,269	71.9%	1,842	8.1%	348	1.5%		

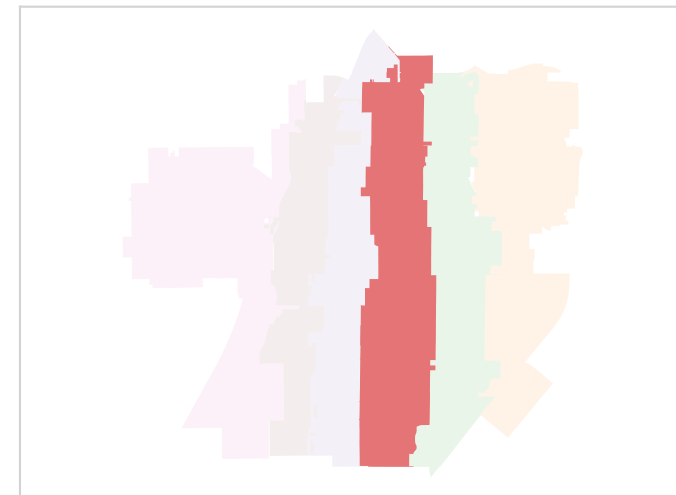
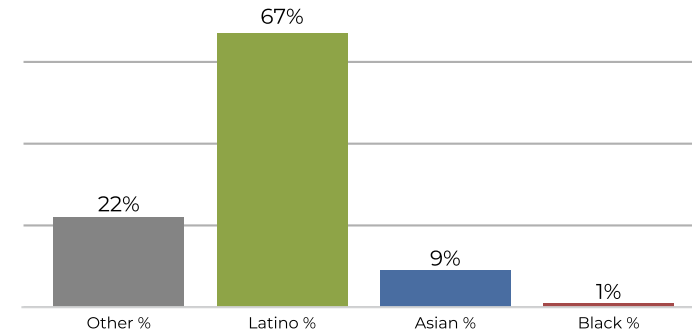
**District 3**



**2020 Census**

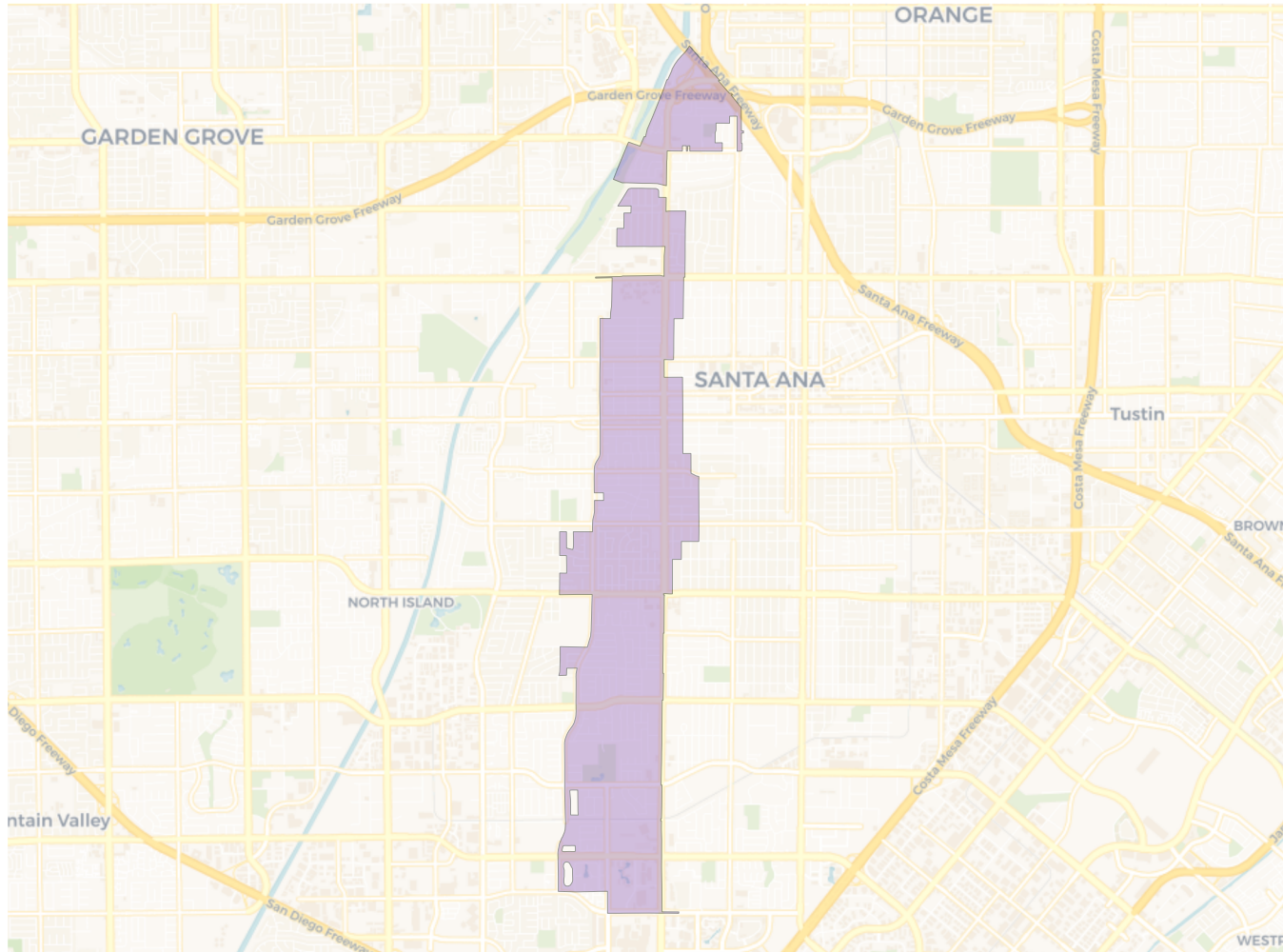


**Citizen Voting Age Population**

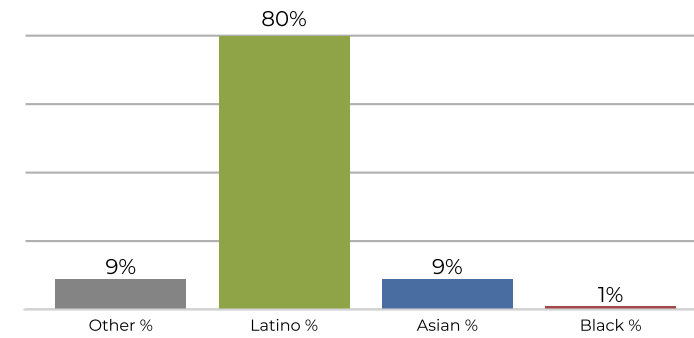


Population	Deviation	Deviation %	Other	Other %	Latino	Latino %	Asian	Asian %	Black	Black %
72,226	20,406	39.4%	8,891	12.3%	58,095	80.4%	4,481	6.2%	759	1.1%
Total CVAP	Other CVAP	Other CVAP %	Latino CVAP	Latino CVAP %	Asian CVAP	Asian CVAP %	Black CVAP	Black CVAP %		
35,670	7,928	22.2%	23,957	67.2%	3,204	9.0%	581	1.6%		

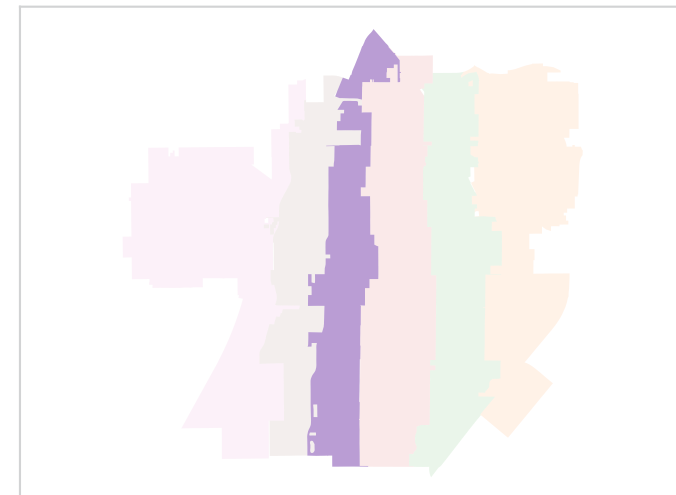
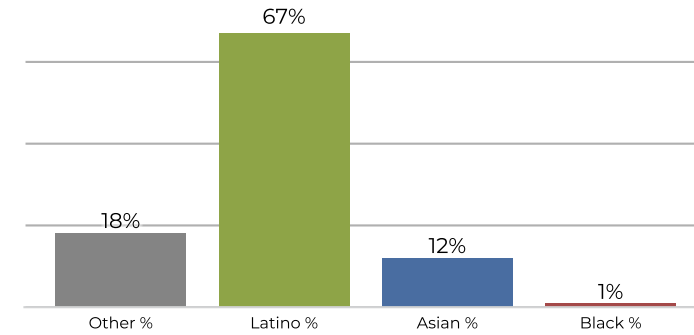
**District 4**



**2020 Census**

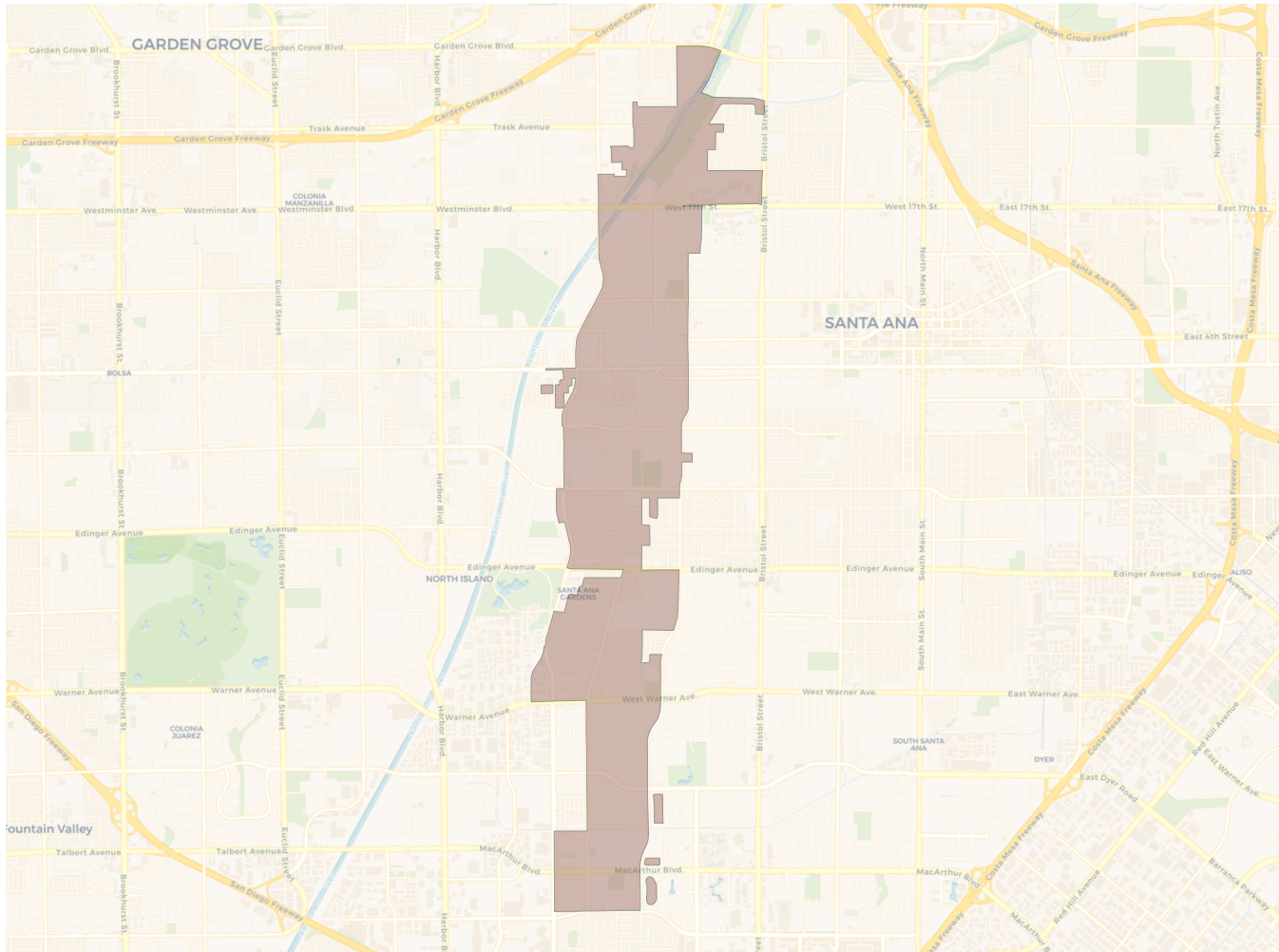


**Citizen Voting Age Population**

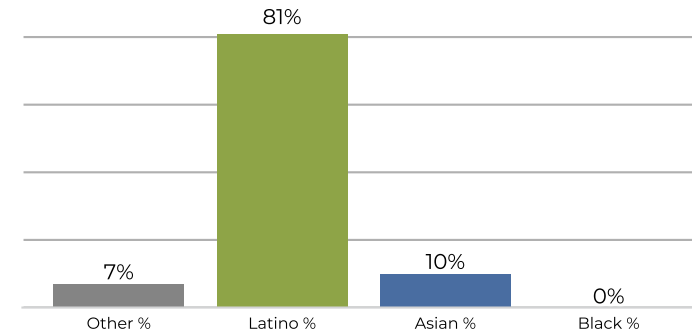


Population	Deviation	Deviation %	Other	Other %	Latino	Latino %	Asian	Asian %	Black	Black %
46,632	-5,188	-10.0%	4,429	9.5%	37,328	80.0%	4,374	9.4%	501	1.1%
Total CVAP	Other CVAP	Other CVAP %	Latino CVAP	Latino CVAP %	Asian CVAP	Asian CVAP %	Black CVAP	Black CVAP %		
23,787	4,461	18.8%	15,954	67.1%	3,023	12.7%	348	1.5%		

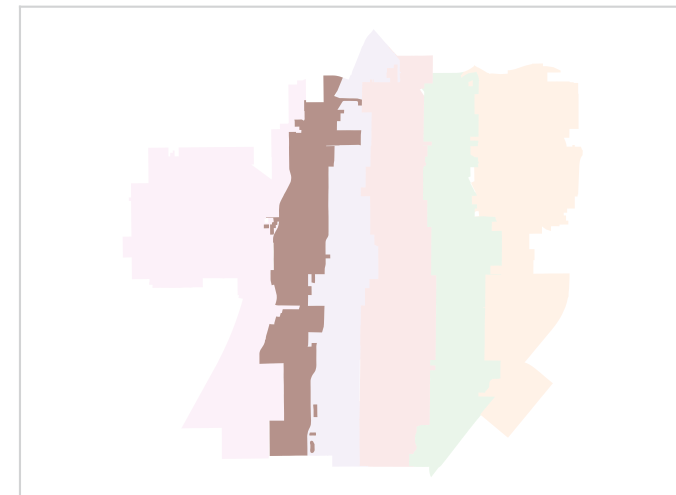
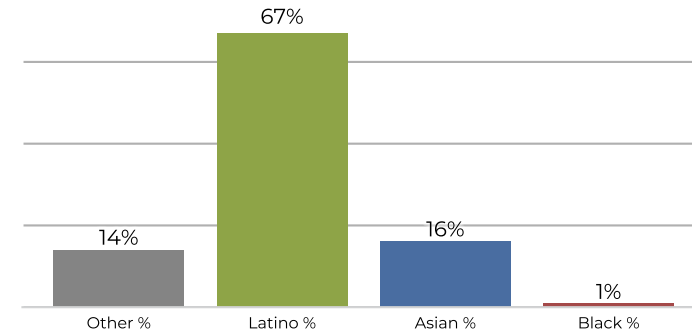
**District 5**



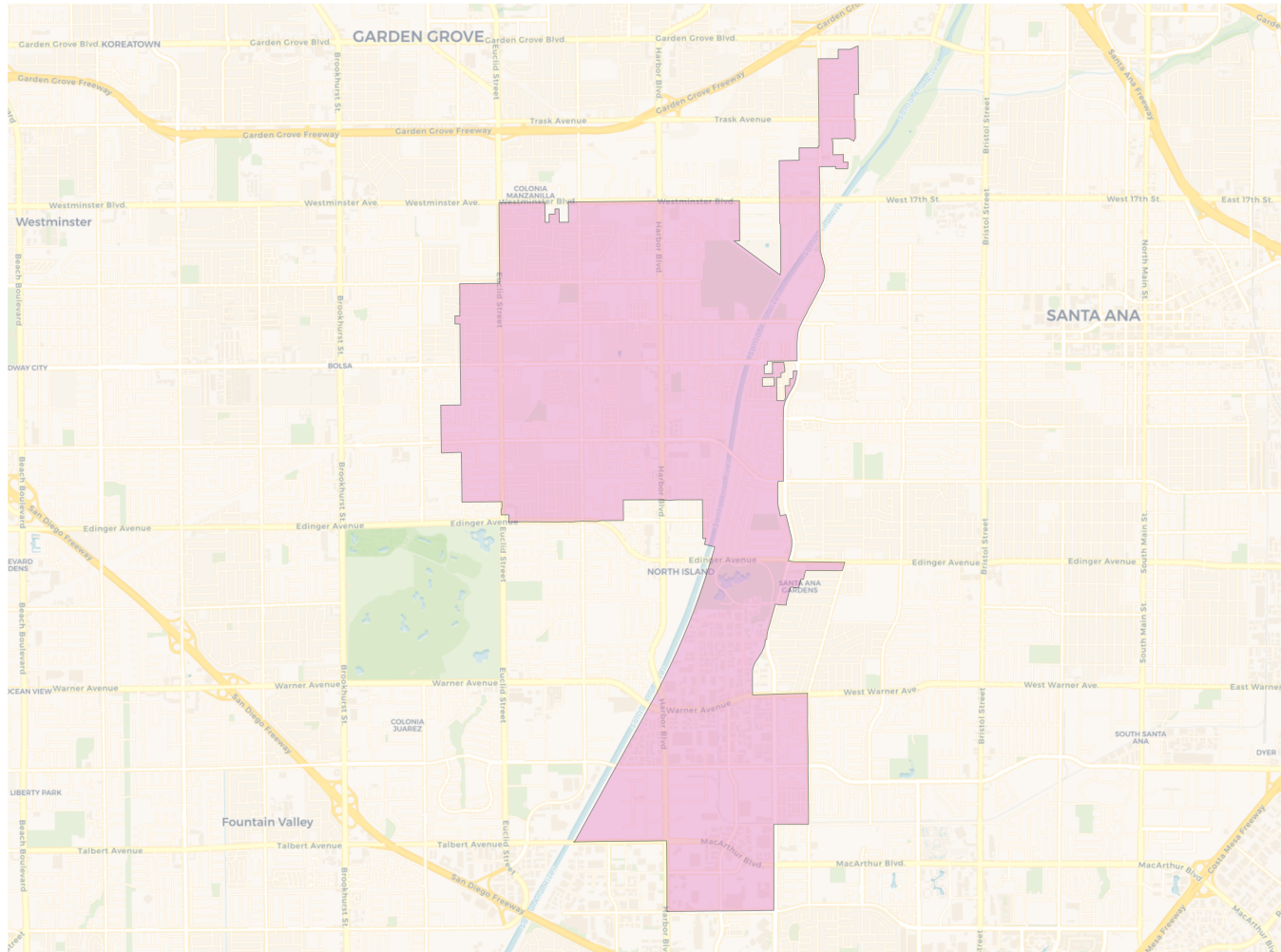
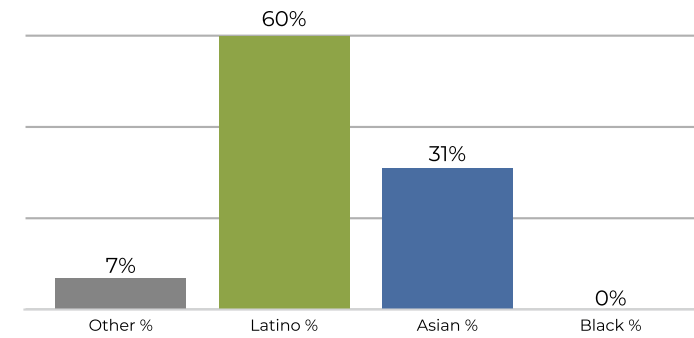
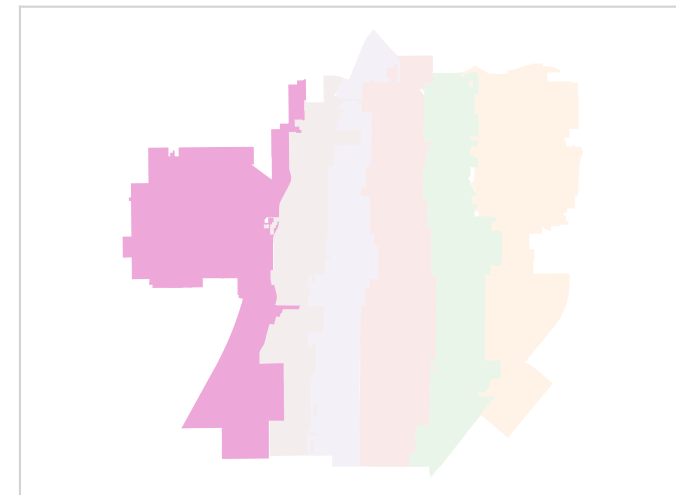
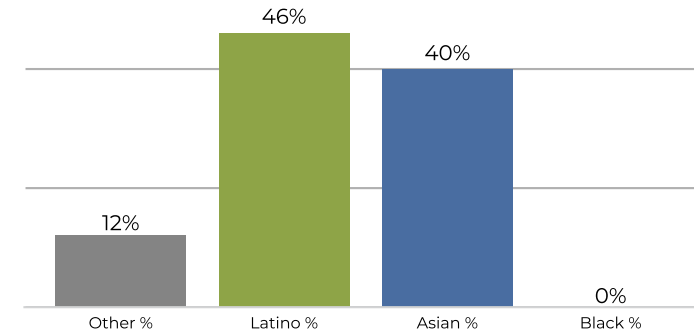
**2020 Census**



**Citizen Voting Age Population**



Population	Deviation	Deviation %	Other	Other %	Latino	Latino %	Asian	Asian %	Black	Black %
44,269	-7,551	-14.6%	3,155	7.1%	36,235	81.9%	4,510	10.2%	369	0.8%
Total CVAP	Other CVAP	Other CVAP %	Latino CVAP	Latino CVAP %	Asian CVAP	Asian CVAP %	Black CVAP	Black CVAP %		
21,009	3,013	14.3%	14,109	67.2%	3,498	16.6%	390	1.9%		

**District 6**

**2020 Census**

**Citizen Voting Age Population**


Population	Deviation	Deviation %	Other	Other %	Latino	Latino %	Asian	Asian %	Black	Black %
61,142	9,322	18.0%	4,302	7.0%	36,979	60.5%	19,439	31.8%	422	0.7%
<b>Total CVAP</b>	<b>Other CVAP</b>	<b>Other CVAP %</b>	<b>Latino CVAP</b>	<b>Latino CVAP %</b>	<b>Asian CVAP</b>	<b>Asian CVAP %</b>	<b>Black CVAP</b>	<b>Black CVAP %</b>		
34,008	4,176	12.3%	15,939	46.9%	13,651	40.1%	241	0.7%		