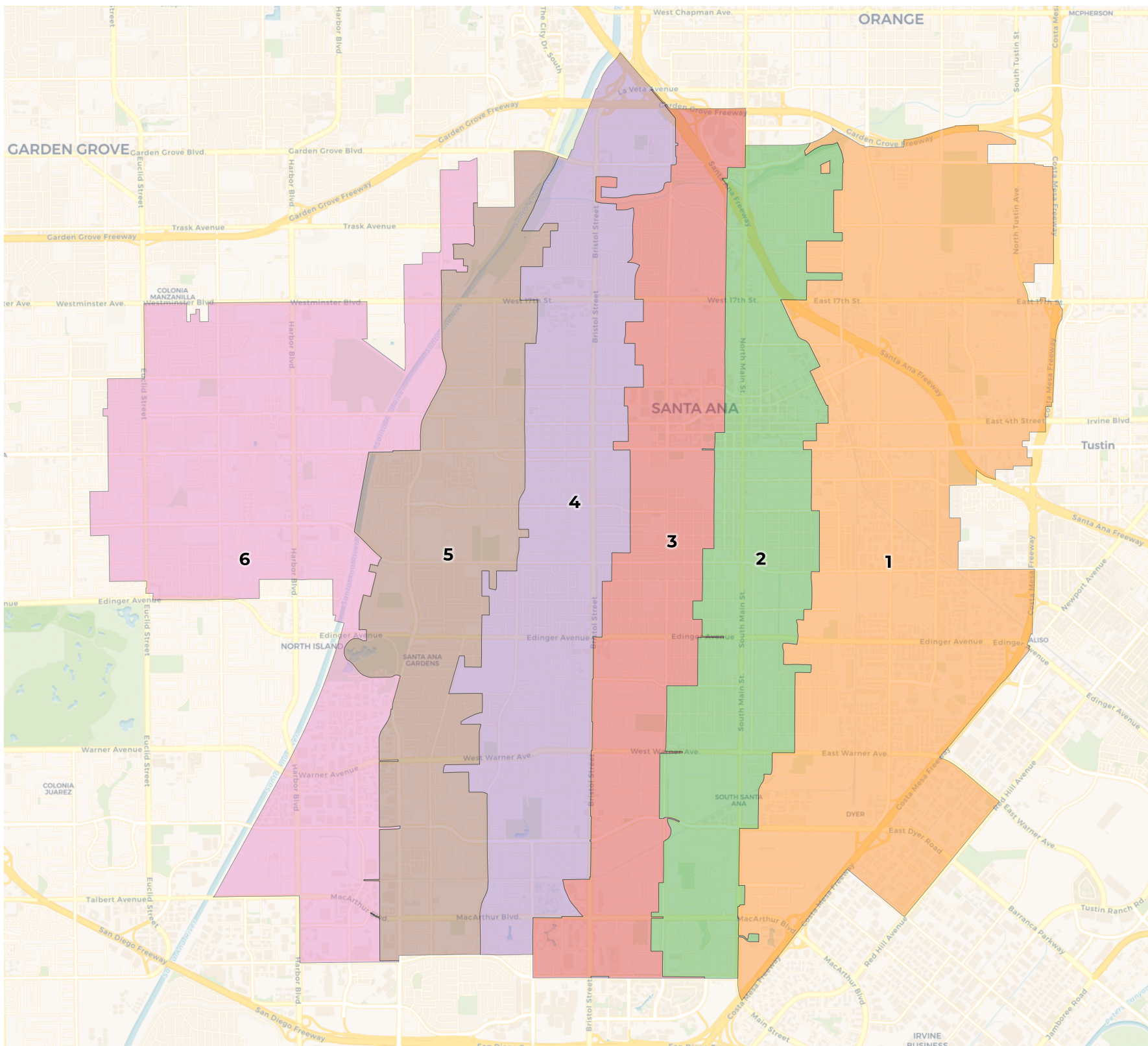


# City of Santa Ana

87849

# REDISTRICTING PARTNERS

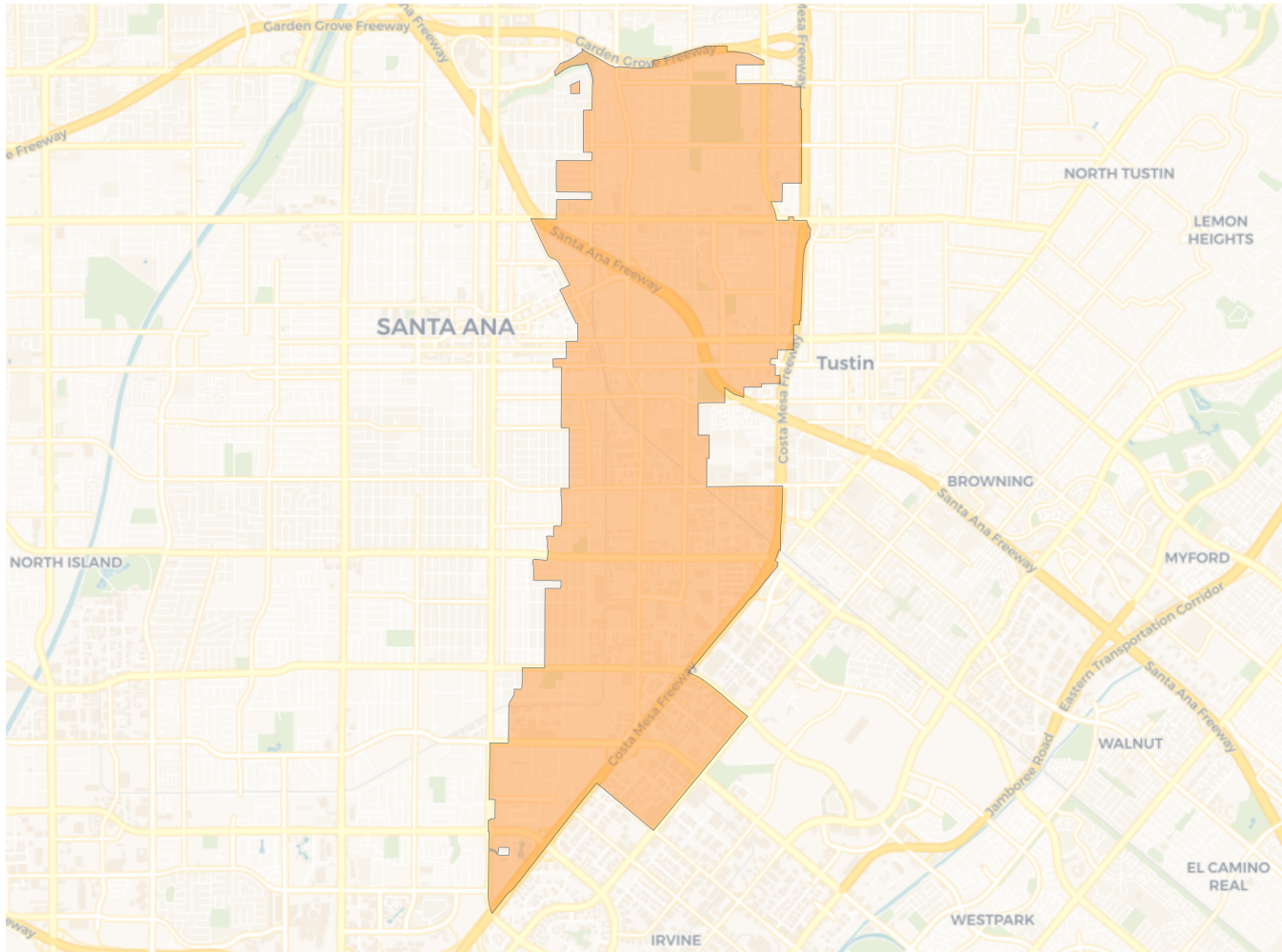
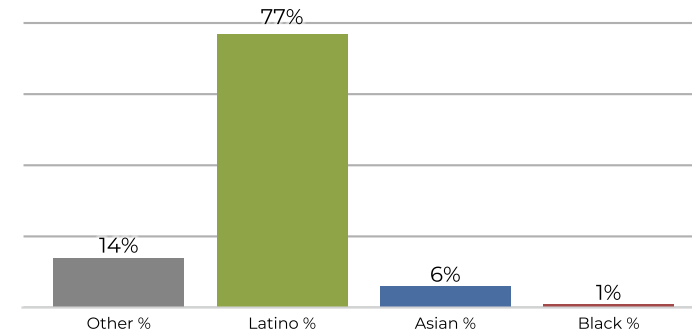
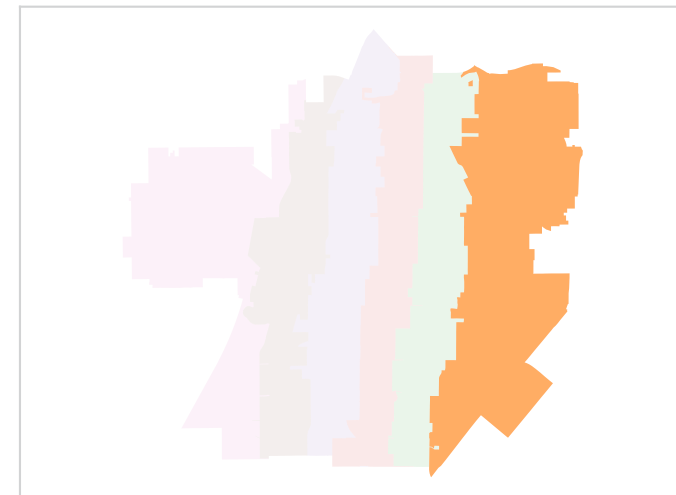
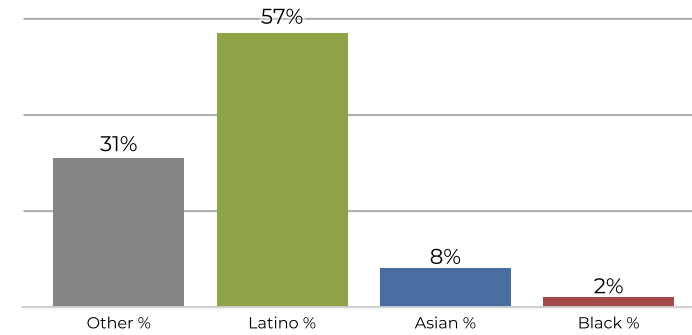


**2020 Census**

	1	2	3	4	5	6
Population	51,955	51,980	51,902	51,936	51,837	51,783
Deviation	56	81	3	37	-62	-116
Deviation %	0.1%	0.2%	0.0%	0.1%	-0.1%	-0.2%
Other	7,765	5,466	6,722	5,053	3,798	3,402
Other %	14.9%	10.5%	13.0%	9.7%	7.3%	6.6%
Latino	40,424	43,482	41,284	41,684	41,938	30,100
Latino %	77.8%	83.7%	79.5%	80.3%	80.9%	58.1%
Asian	3,230	2,635	3,300	4,680	5,643	17,969
Asian %	6.2%	5.1%	6.4%	9.0%	10.9%	34.7%
Black	536	397	596	519	458	312
Black %	1.0%	0.8%	1.1%	1.0%	0.9%	0.6%

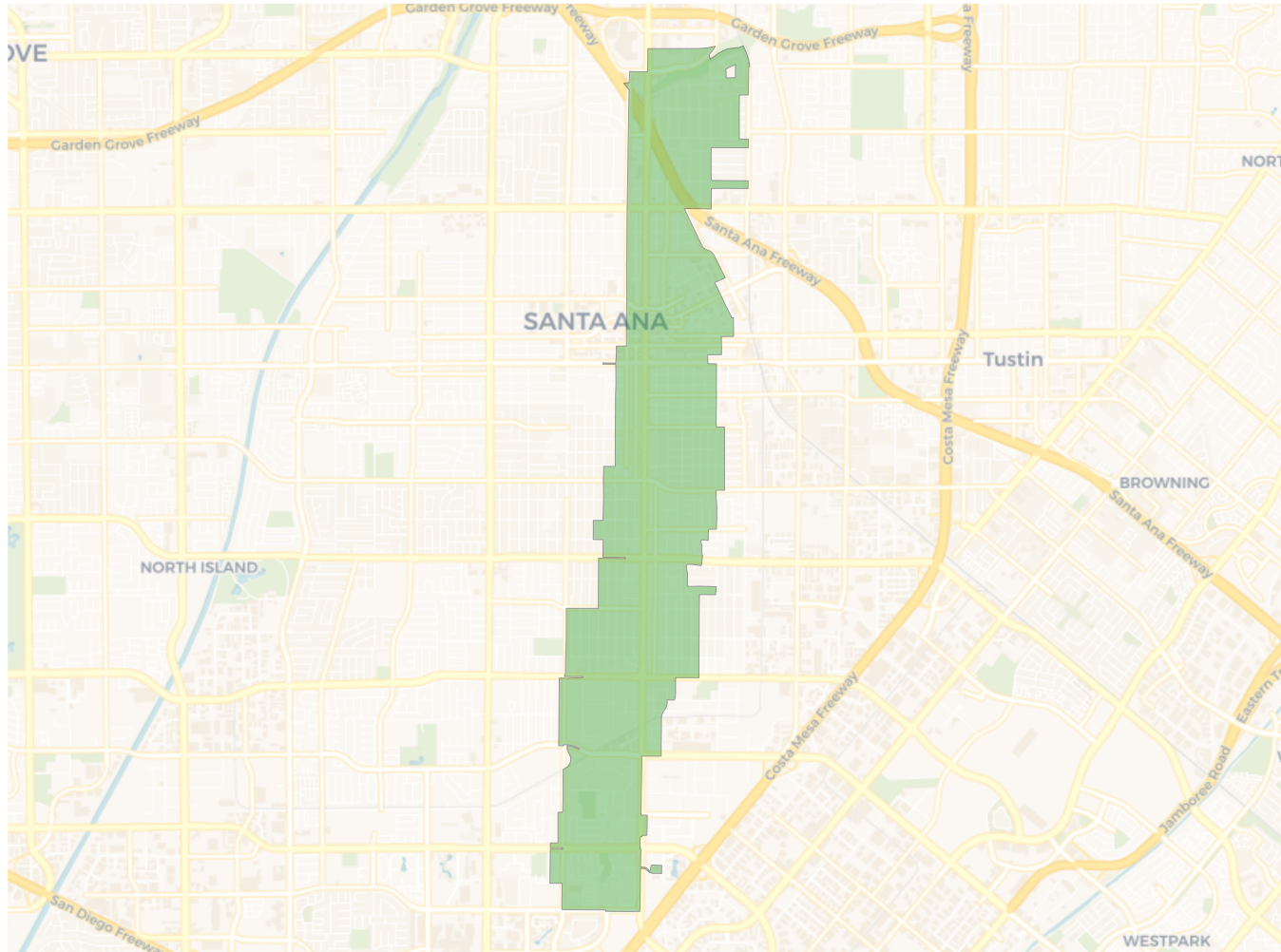
**Citizen Voting Age Population (CVAP)**

	1	2	3	4	5	6
Total CVAP	25,271	23,847	24,057	27,188	24,955	28,895
Other CVAP	7,949	4,998	5,386	5,263	3,612	3,309
Other CVAP %	31.5%	21.0%	22.4%	19.4%	14.5%	11.5%
Latino CVAP	14,496	16,772	16,163	17,886	16,584	12,919
Latino CVAP %	57.4%	70.3%	67.2%	65.8%	66.5%	44.7%
Asian CVAP	2,254	1,656	2,143	3,628	4,283	12,527
Asian CVAP %	8.9%	6.9%	8.9%	13.3%	17.2%	43.4%
Black CVAP	573	421	364	412	475	140
Black CVAP %	2.3%	1.8%	1.5%	1.5%	1.9%	0.5%

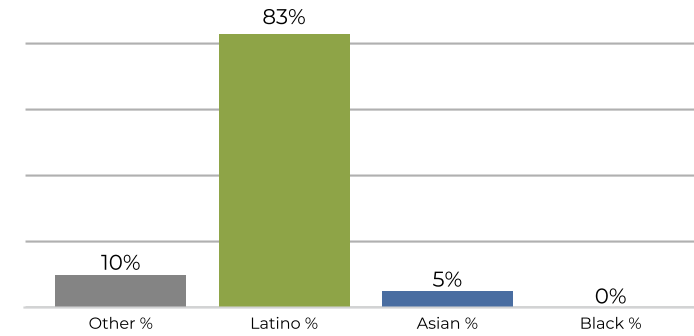
**District 1**

**2020 Census**

**Citizen Voting Age Population**


Population	Deviation	Deviation %	Other	Other %	Latino	Latino %	Asian	Asian %	Black	Black %
51,955	56	0.1%	7,765	14.9%	40,424	77.8%	3,230	6.2%	536	1.0%
Total CVAP	Other CVAP	Other CVAP %	Latino CVAP	Latino CVAP %	Asian CVAP	Asian CVAP %	Black CVAP	Black CVAP %		
25,271	7,949	31.5%	14,496	57.4%	2,254	8.9%	573	2.3%		

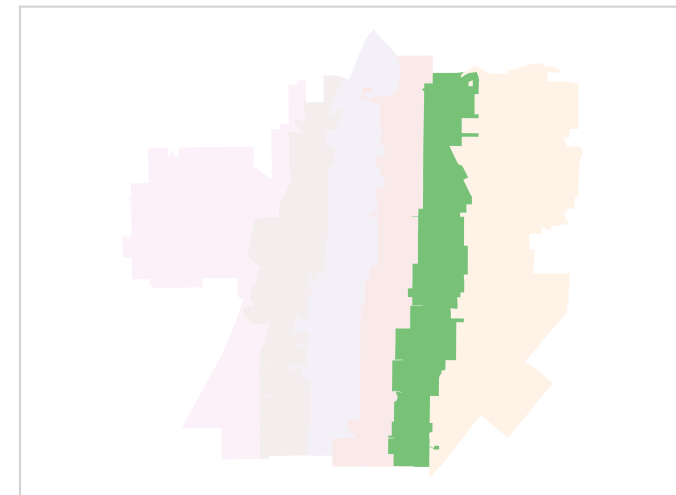
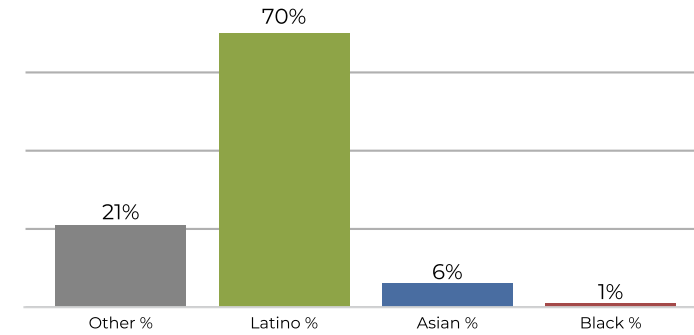
**District 2**



**2020 Census**

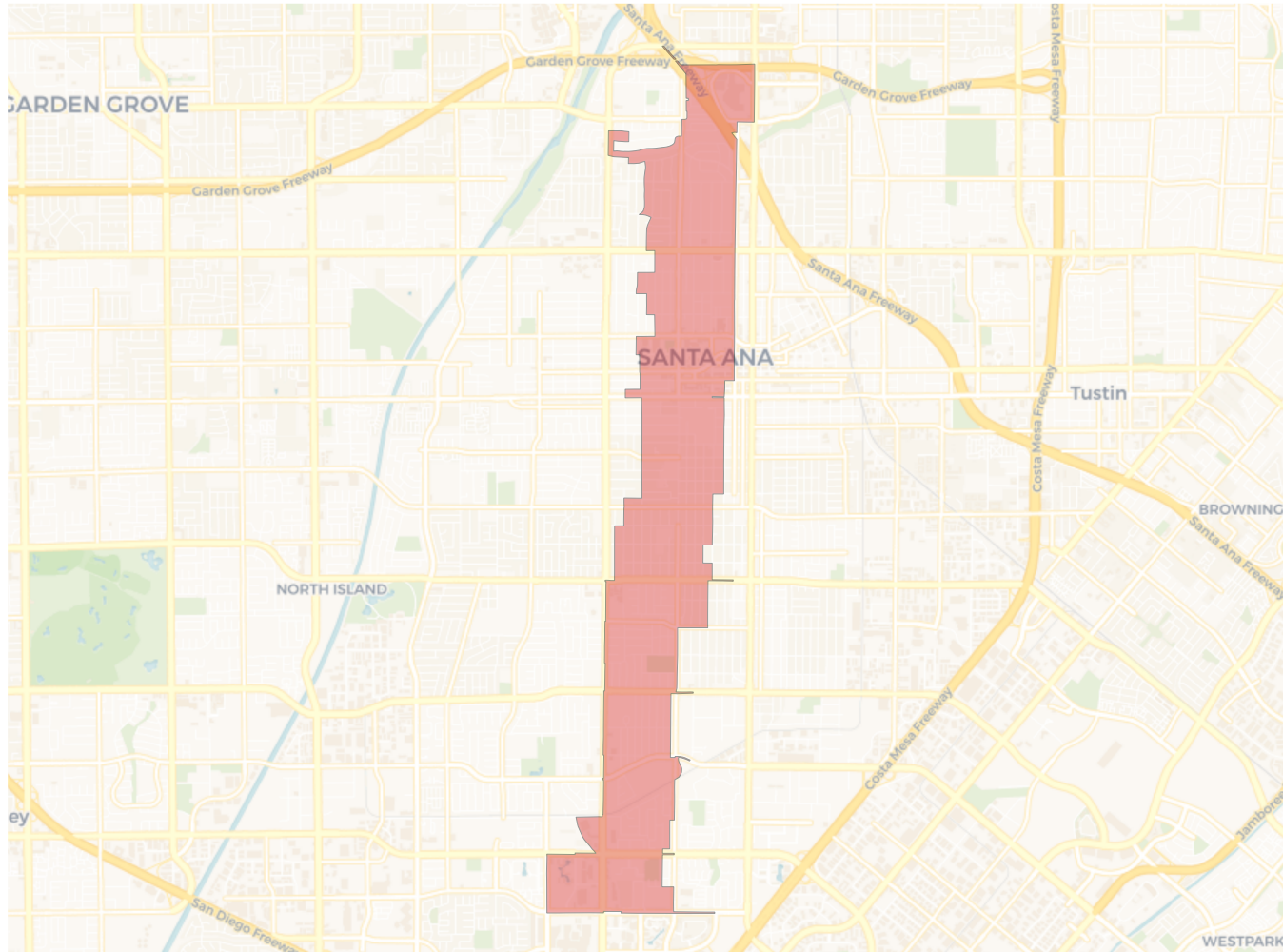


**Citizen Voting Age Population**

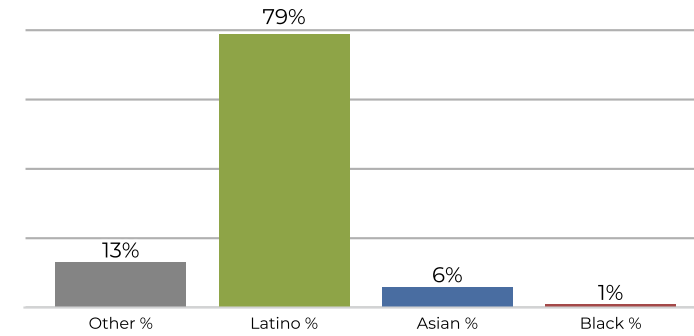


Population	Deviation	Deviation %	Other	Other %	Latino	Latino %	Asian	Asian %	Black	Black %
51,980	81	0.2%	5,466	10.5%	43,482	83.7%	2,635	5.1%	397	0.8%
Total CVAP	Other CVAP	Other CVAP %	Latino CVAP	Latino CVAP %	Asian CVAP	Asian CVAP %	Black CVAP	Black CVAP %		
23,847	4,998	21.0%	16,772	70.3%	1,656	6.9%	421	1.8%		

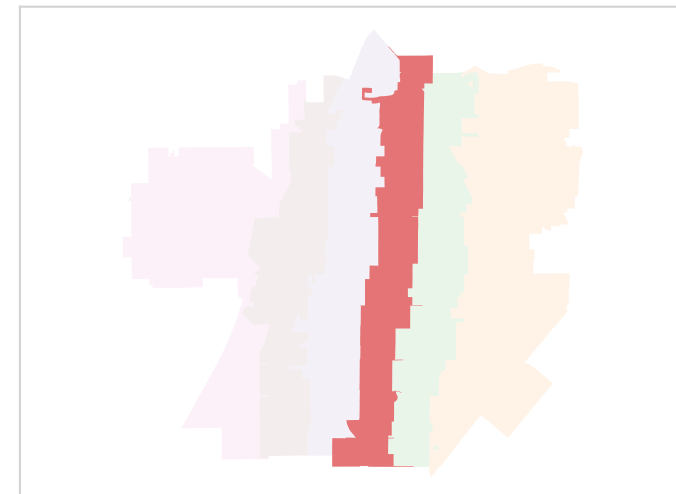
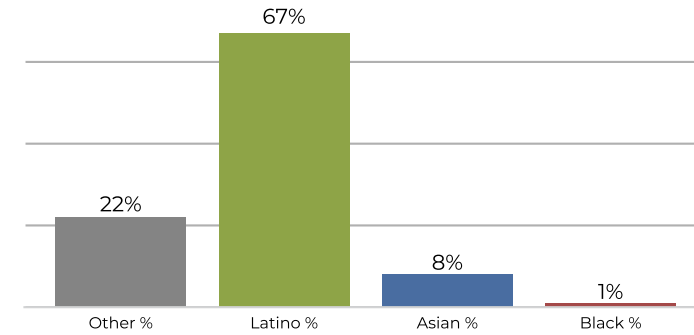
**District 3**



**2020 Census**

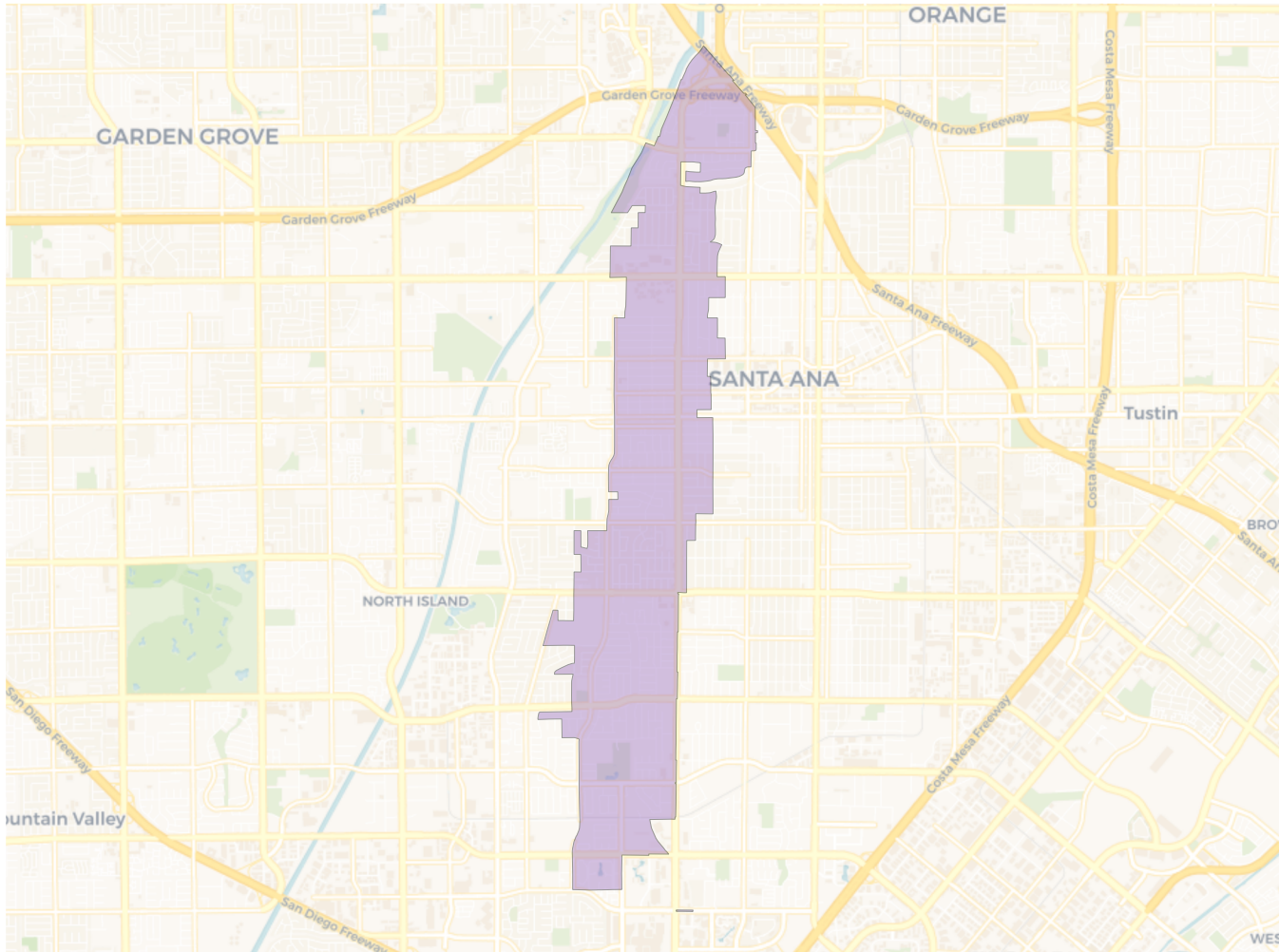


**Citizen Voting Age Population**

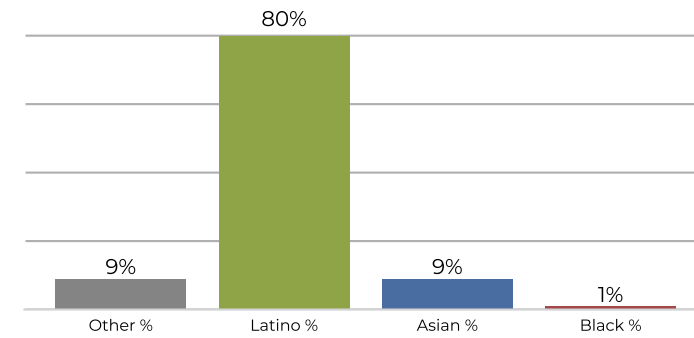


Population	Deviation	Deviation %	Other	Other %	Latino	Latino %	Asian	Asian %	Black	Black %
51,902	3	0.0%	6,722	13.0%	41,284	79.5%	3,300	6.4%	596	1.1%
<b>Total CVAP</b>	<b>Other CVAP</b>	<b>Other CVAP %</b>	<b>Latino CVAP</b>	<b>Latino CVAP %</b>	<b>Asian CVAP</b>	<b>Asian CVAP %</b>	<b>Black CVAP</b>	<b>Black CVAP %</b>		
24,057	5,386	22.4%	16,163	67.2%	2,143	8.9%	364	1.5%		

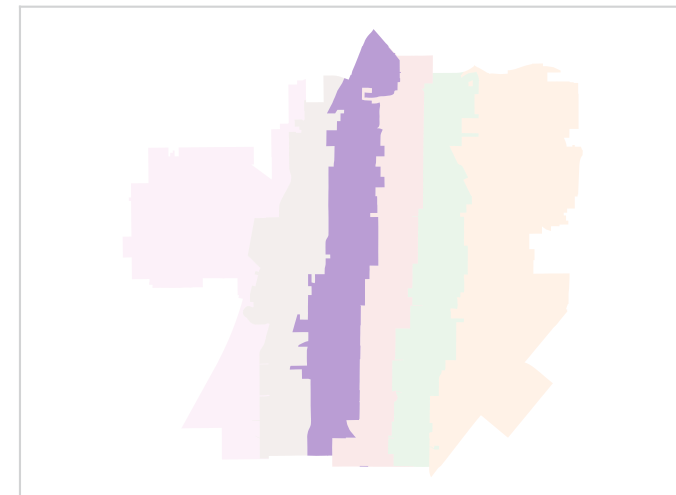
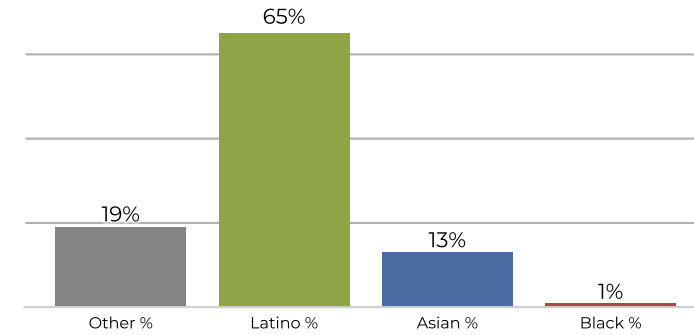
**District 4**



**2020 Census**

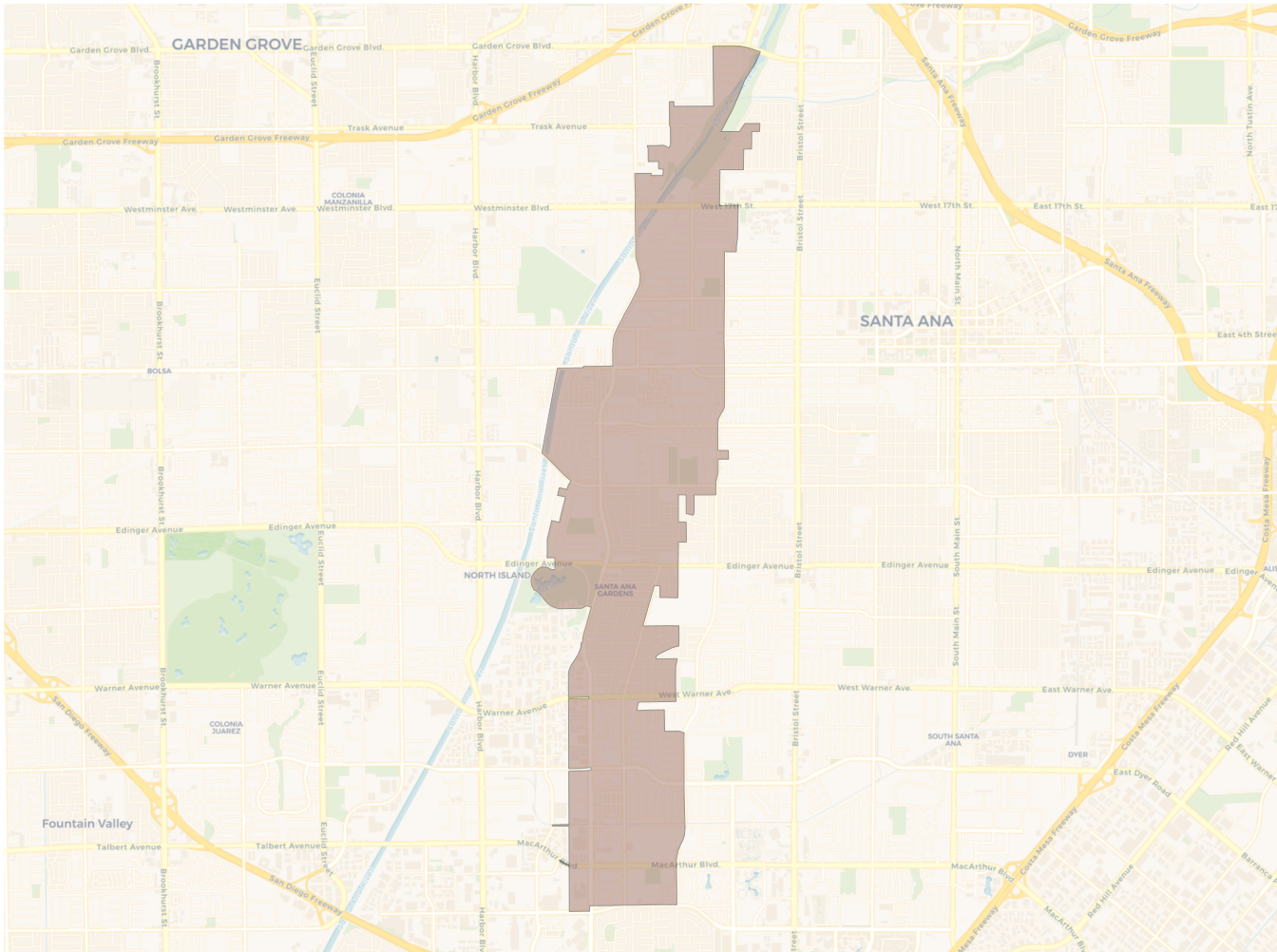


**Citizen Voting Age Population**

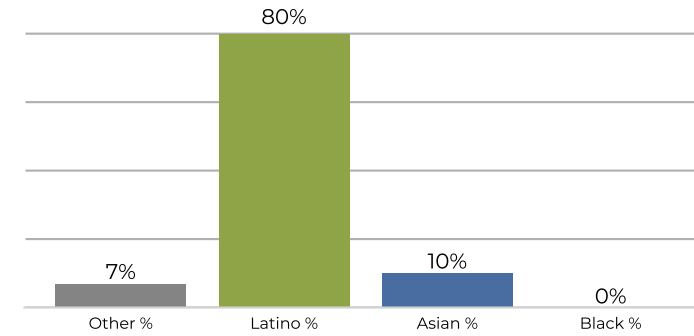


Population	Deviation	Deviation %	Other	Other %	Latino	Latino %	Asian	Asian %	Black	Black %
51,936	37	0.1%	5,053	9.7%	41,684	80.3%	4,680	9.0%	519	1.0%
Total CVAP	Other CVAP	Other CVAP %	Latino CVAP	Latino CVAP %	Asian CVAP	Asian CVAP %	Black CVAP	Black CVAP %		
27,188	5,263	19.4%	17,886	65.8%	3,628	13.3%	412	1.5%		

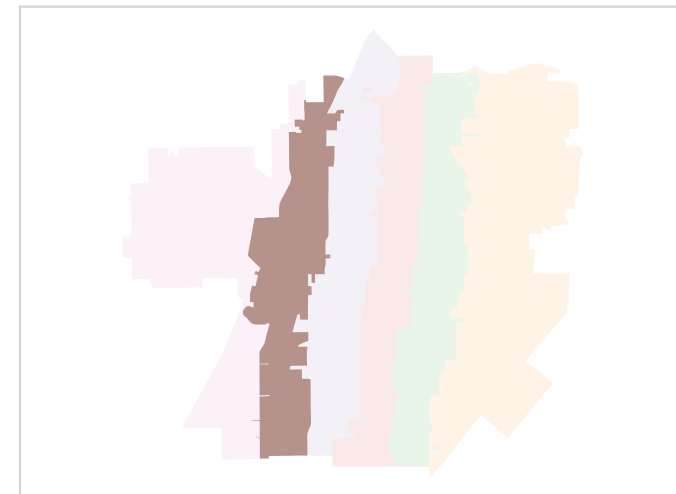
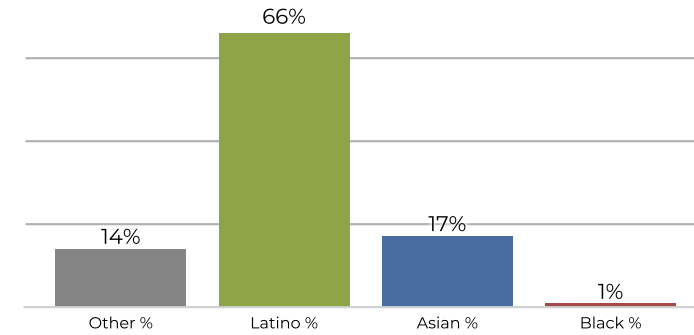
**District 5**



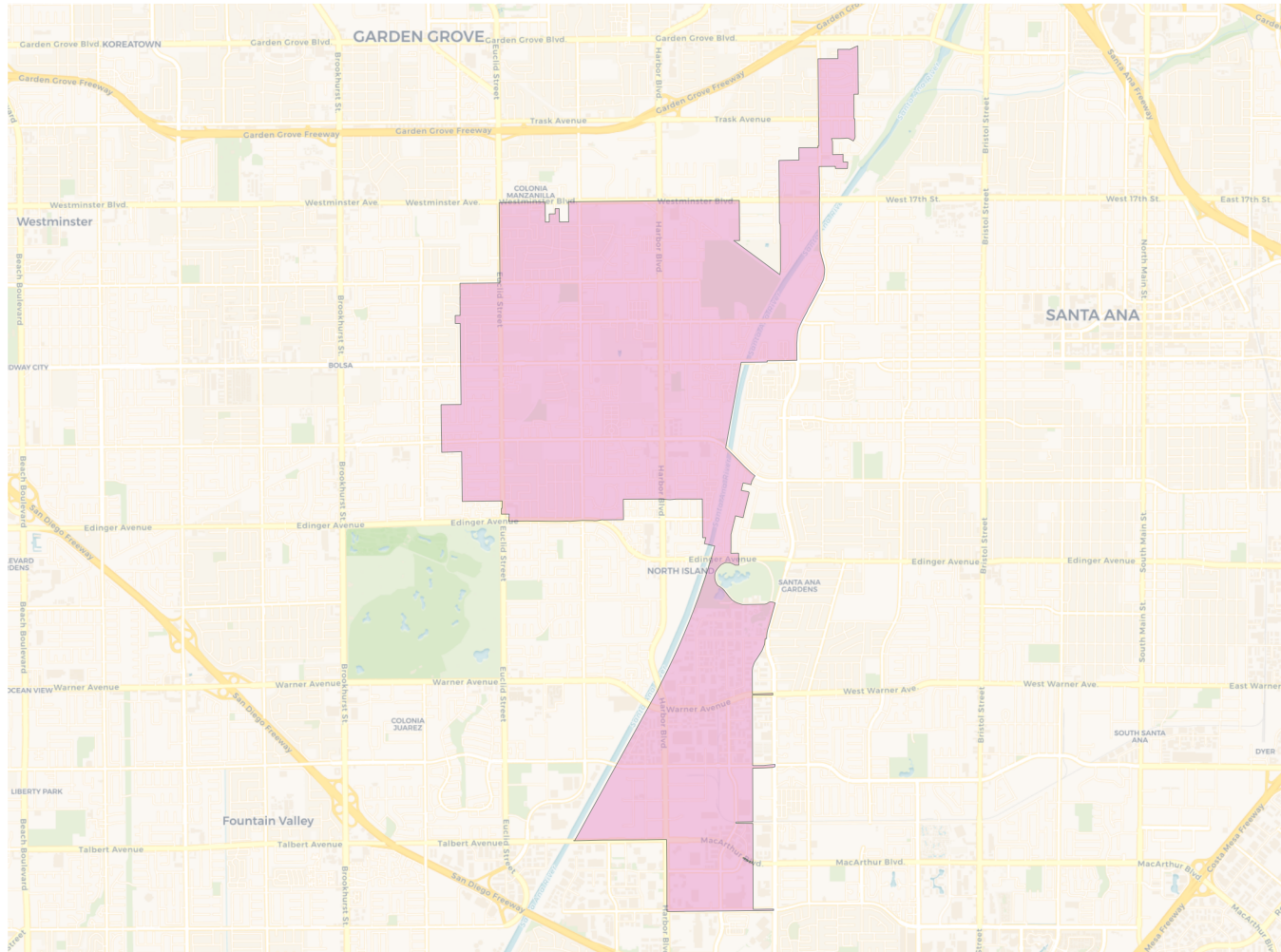
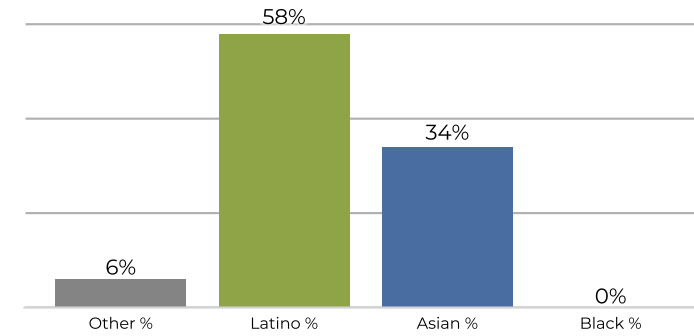
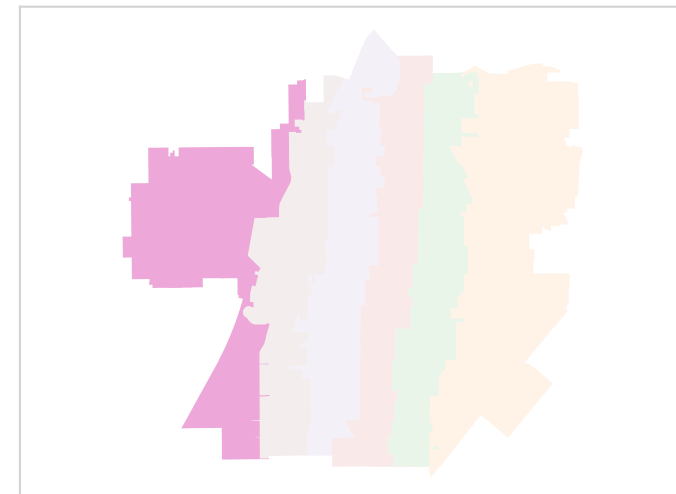
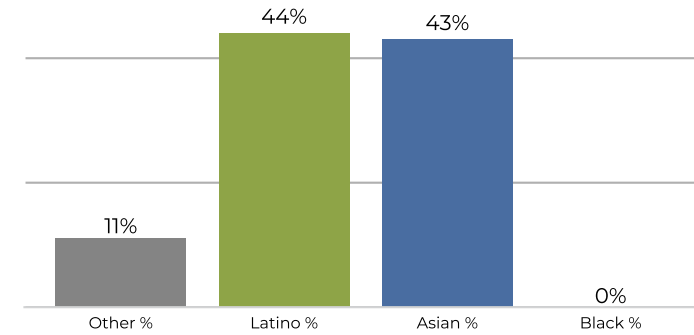
**2020 Census**



**Citizen Voting Age Population**



Population	Deviation	Deviation %	Other	Other %	Latino	Latino %	Asian	Asian %	Black	Black %
51,837	-62	-0.1%	3,798	7.3%	41,938	80.9%	5,643	10.9%	458	0.9%
Total CVAP	Other CVAP	Other CVAP %	Latino CVAP	Latino CVAP %	Asian CVAP	Asian CVAP %	Black CVAP	Black CVAP %		
24,955	3,612	14.5%	16,584	66.5%	4,283	17.2%	475	1.9%		

**District 6**

**2020 Census**

**Citizen Voting Age Population**


Population	Deviation	Deviation %	Other	Other %	Latino	Latino %	Asian	Asian %	Black	Black %
51,783	-116	-0.2%	3,402	6.6%	30,100	58.1%	17,969	34.7%	312	0.6%
<b>Total CVAP</b>	<b>Other CVAP</b>	<b>Other CVAP %</b>	<b>Latino CVAP</b>	<b>Latino CVAP %</b>	<b>Asian CVAP</b>	<b>Asian CVAP %</b>	<b>Black CVAP</b>	<b>Black CVAP %</b>		
28,895	3,309	11.5%	12,919	44.7%	12,527	43.4%	140	0.5%		