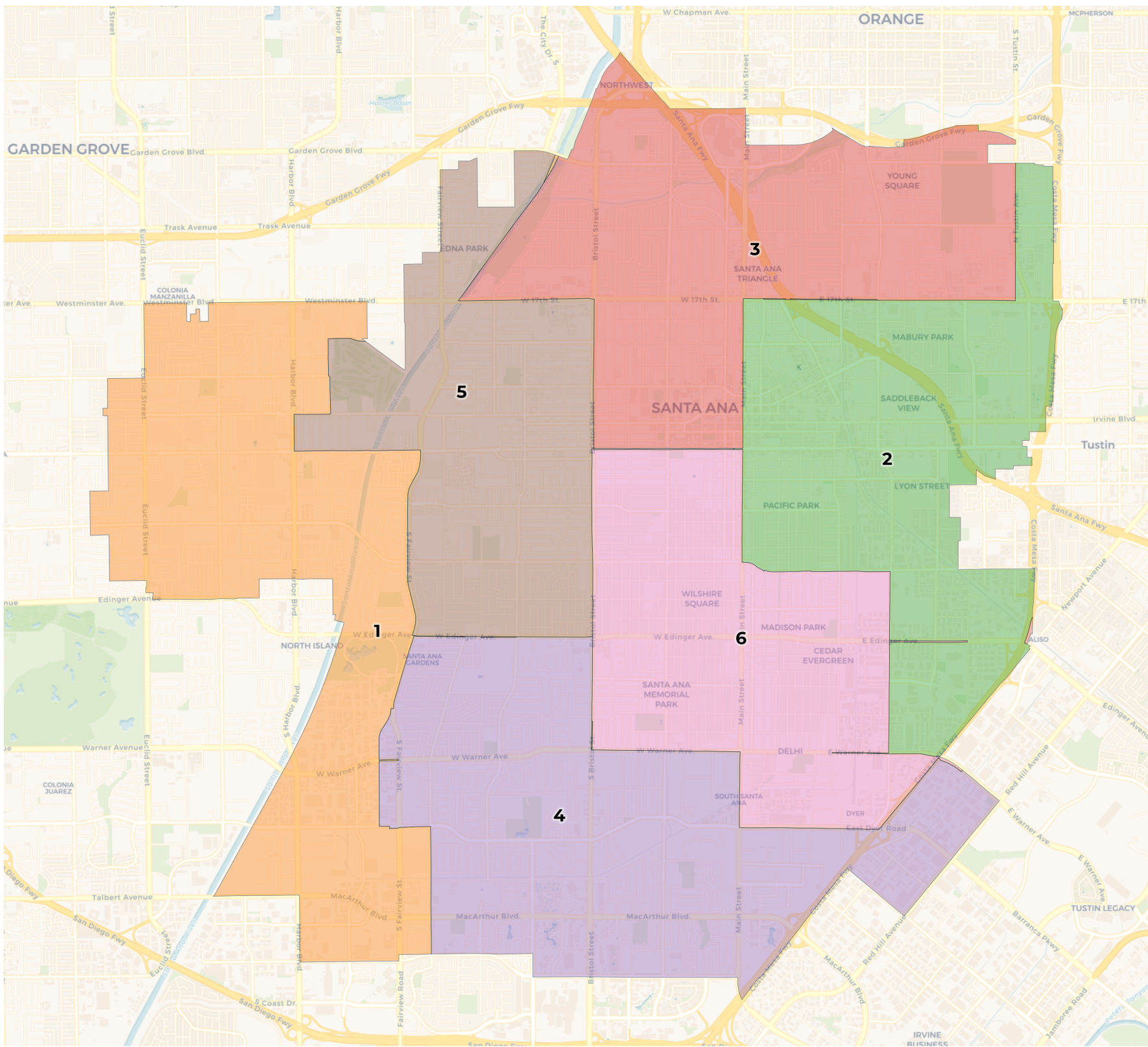


**REDISTRICTING
PARTNERS**

City of Santa Ana

ID92322



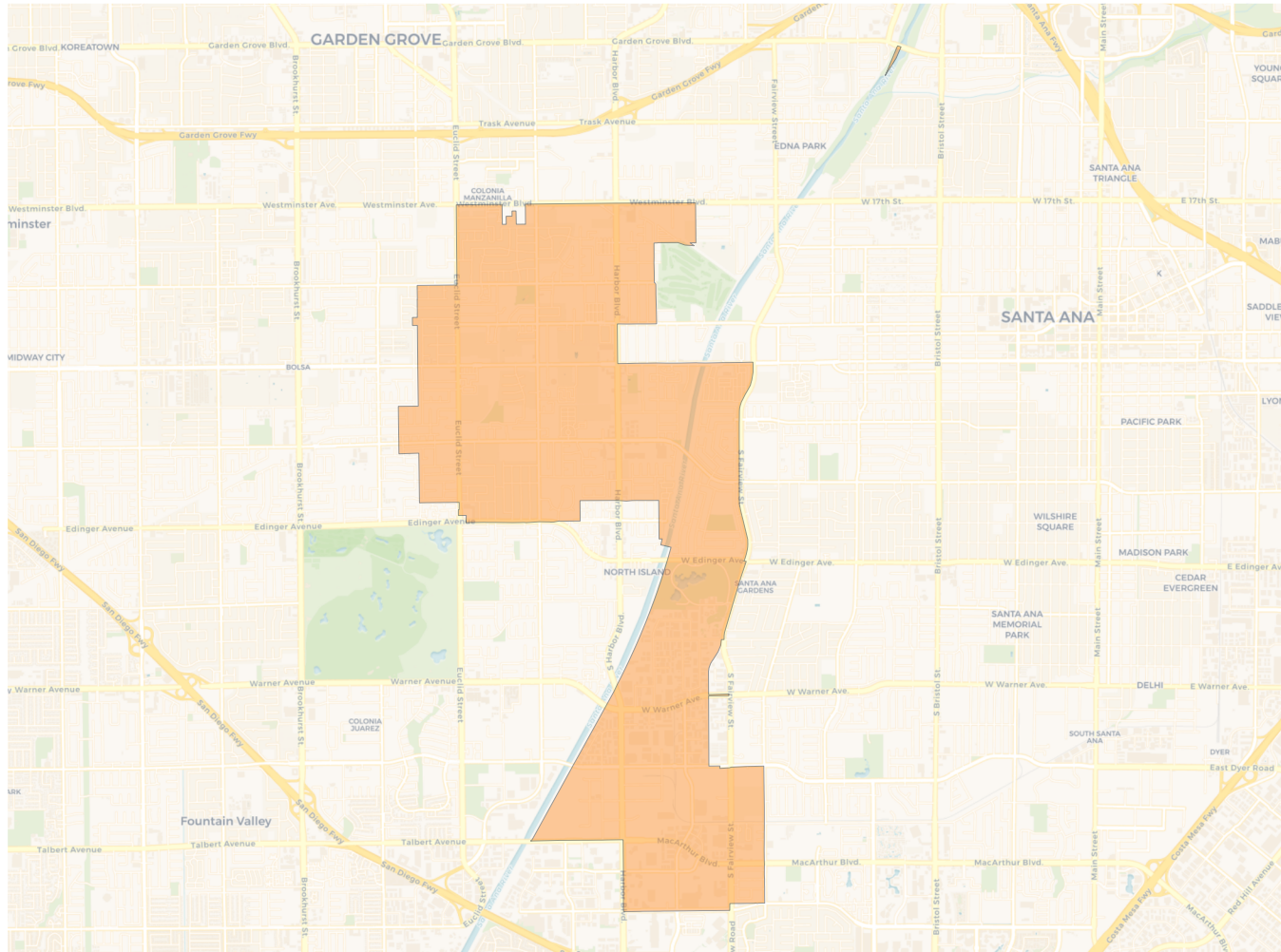
2020 Census

	1	2	3	4	5	6
Population	52,489	48,467	51,894	52,359	53,961	52,483
Deviation	547	-3,475	-48	417	2,019	541
Deviation %	1.1%	-6.7%	-0.1%	0.8%	3.9%	1.0%
Other	3,979	4,249	11,240	8,753	2,015	2,046
Other %	7.6%	8.8%	21.7%	16.7%	3.7%	3.9%
Latino	30,292	41,894	36,196	34,391	47,234	49,061
Latino %	57.7%	86.4%	69.7%	65.7%	87.5%	93.5%
Asian	17,859	1,945	3,718	8,458	4,231	1,273
Asian %	34.0%	4.0%	7.2%	16.2%	7.8%	2.4%
Black	359	379	740	757	481	103
Black %	0.7%	0.8%	1.4%	1.4%	0.9%	0.2%

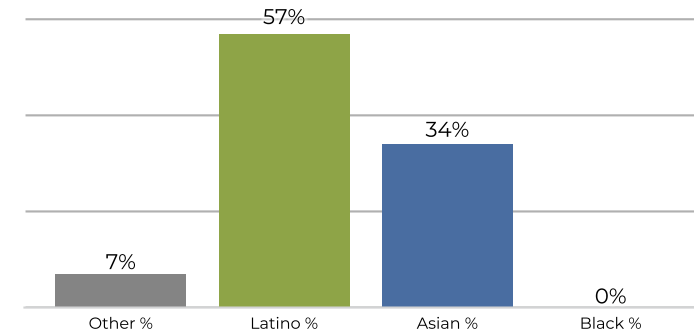
Citizen Voting Age Population (CVAP)

	1	2	3	4	5	6
Total CVAP	30,189	18,882	26,897	32,031	22,634	23,719
Other CVAP	3,665	4,436	9,863	8,502	1,719	2,418
Other CVAP %	12.1%	23.5%	36.7%	26.5%	7.6%	10.2%
Latino CVAP	13,640	12,580	14,031	17,249	17,398	19,963
Latino CVAP %	45.2%	66.6%	52.2%	53.9%	76.9%	84.2%
Asian CVAP	12,680	1,612	2,295	5,512	3,110	1,293
Asian CVAP %	42.0%	8.5%	8.5%	17.2%	13.7%	5.5%
Black CVAP	204	253	708	768	407	45
Black CVAP %	0.7%	1.3%	2.6%	2.4%	1.8%	0.2%

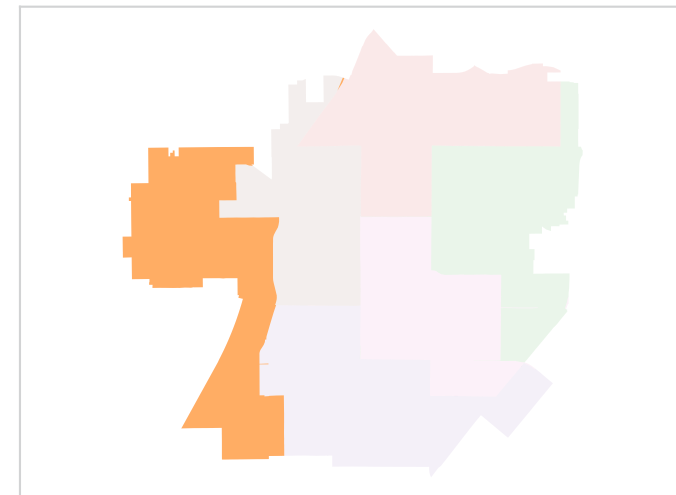
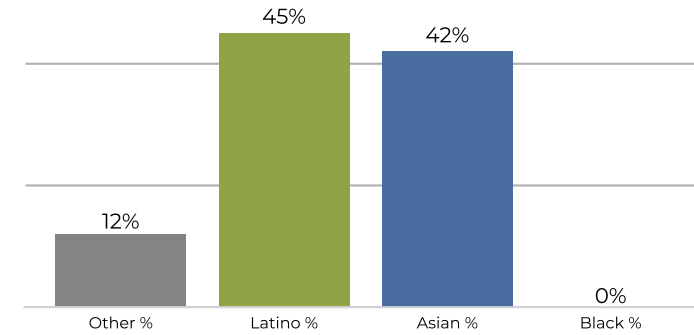
District 1



2020 Census

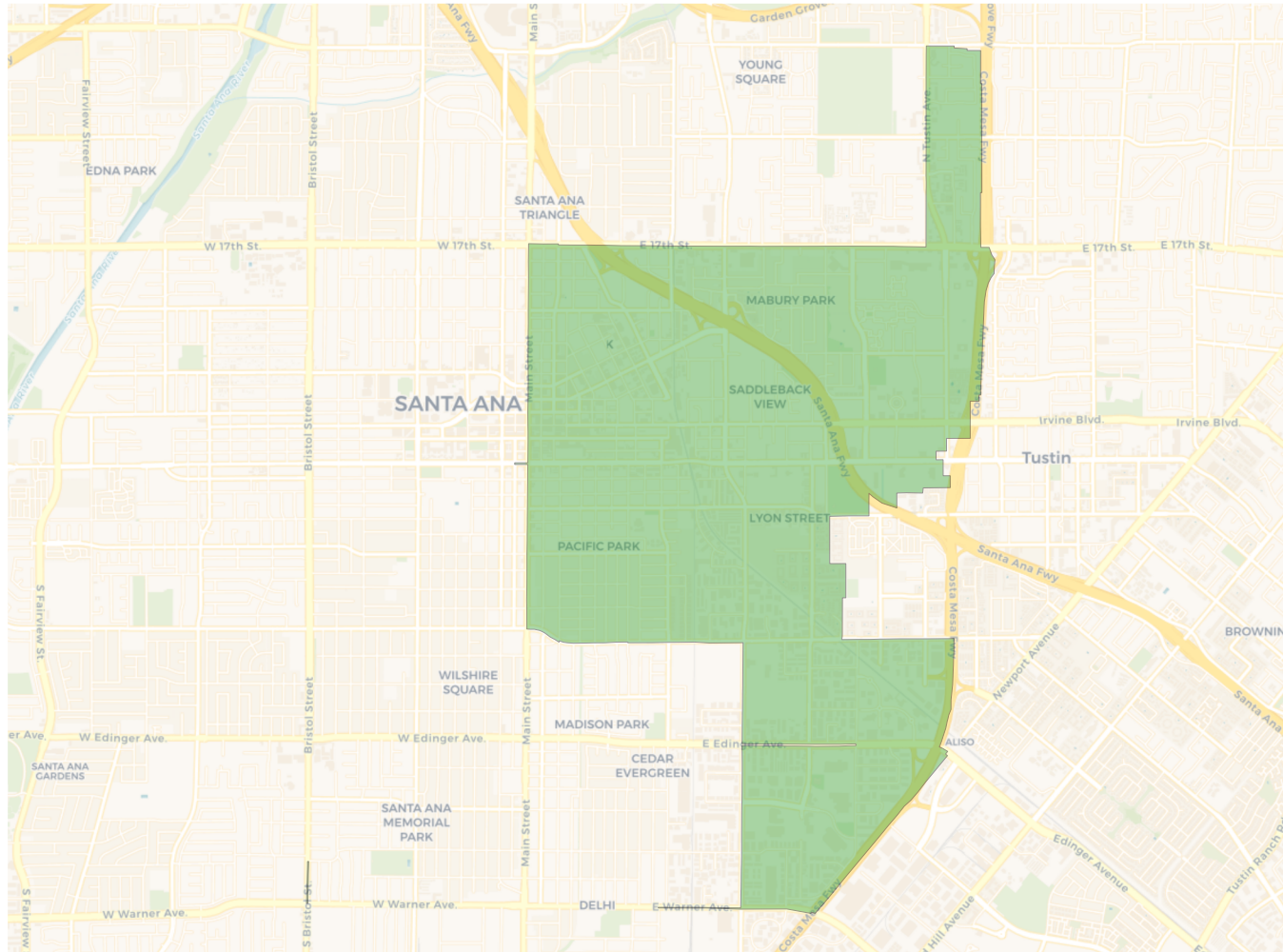


Citizen Voting Age Population

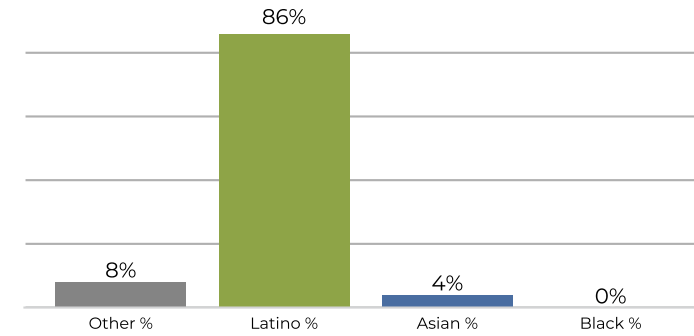


Population	Deviation	Deviation %	Other	Other %	Latino	Latino %	Asian	Asian %	Black	Black %
52,489	547	1.1%	3,979	7.6%	30,292	57.7%	17,859	34.0%	359	0.7%
Total CVAP	Other CVAP	Other CVAP %	Latino CVAP	Latino CVAP %	Asian CVAP	Asian CVAP %	Black CVAP	Black CVAP %		
30,189	3,665	12.1%	13,640	45.2%	12,680	42.0%	204	0.7%		

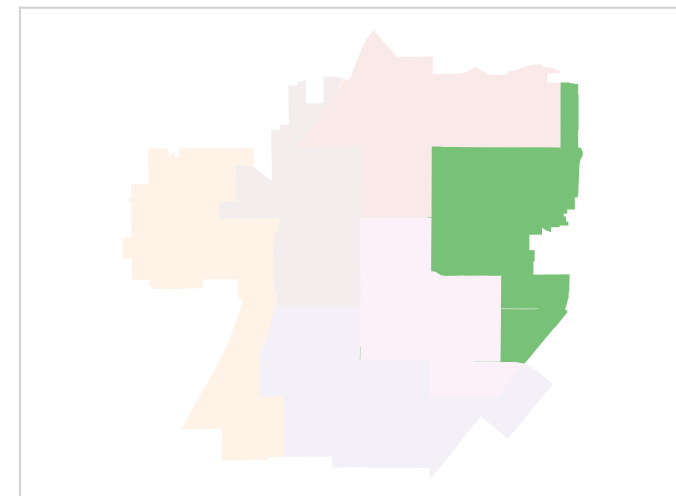
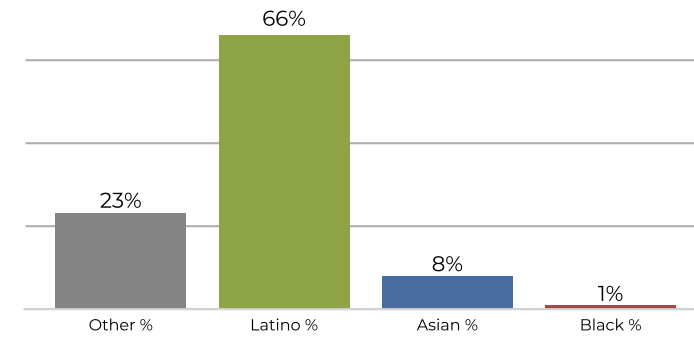
District 2



2020 Census

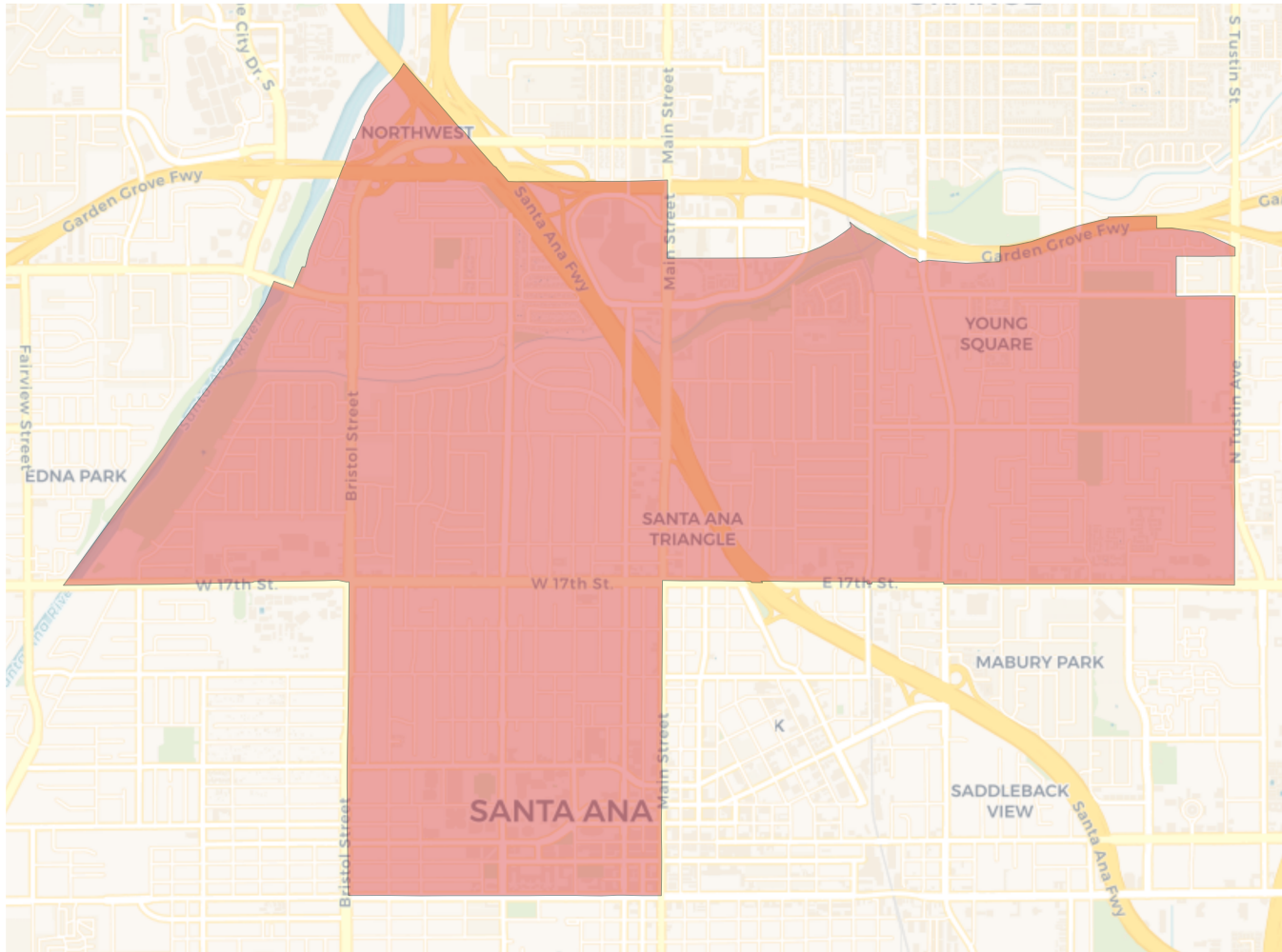


Citizen Voting Age Population

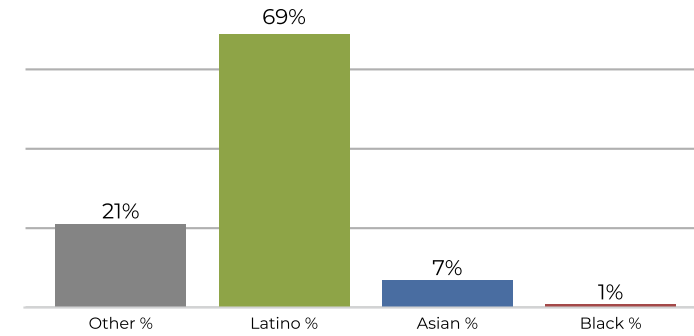


Population	Deviation	Deviation %	Other	Other %	Latino	Latino %	Asian	Asian %	Black	Black %
48,467	-3,475	-6.7%	4,249	8.8%	41,894	86.4%	1,945	4.0%	379	0.8%
Total CVAP	Other CVAP	Other CVAP %	Latino CVAP	Latino CVAP %	Asian CVAP	Asian CVAP %	Black CVAP	Black CVAP %		
18,882	4,436	23.5%	12,580	66.6%	1,612	8.5%	253	1.3%		

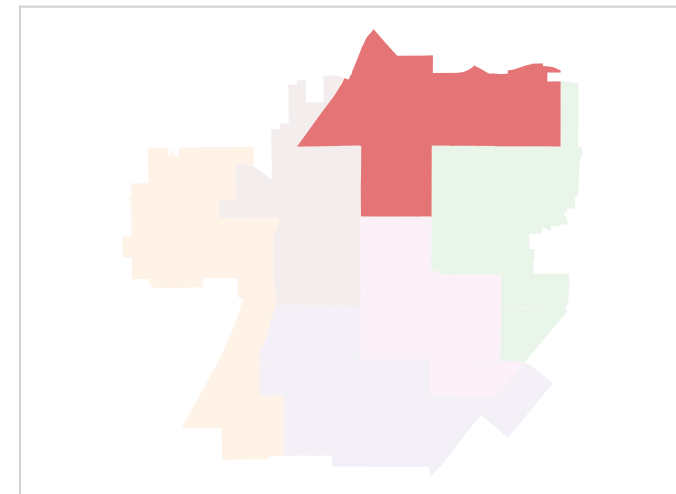
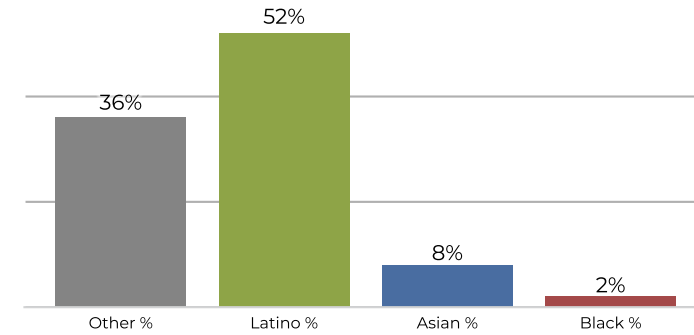
District 3



2020 Census

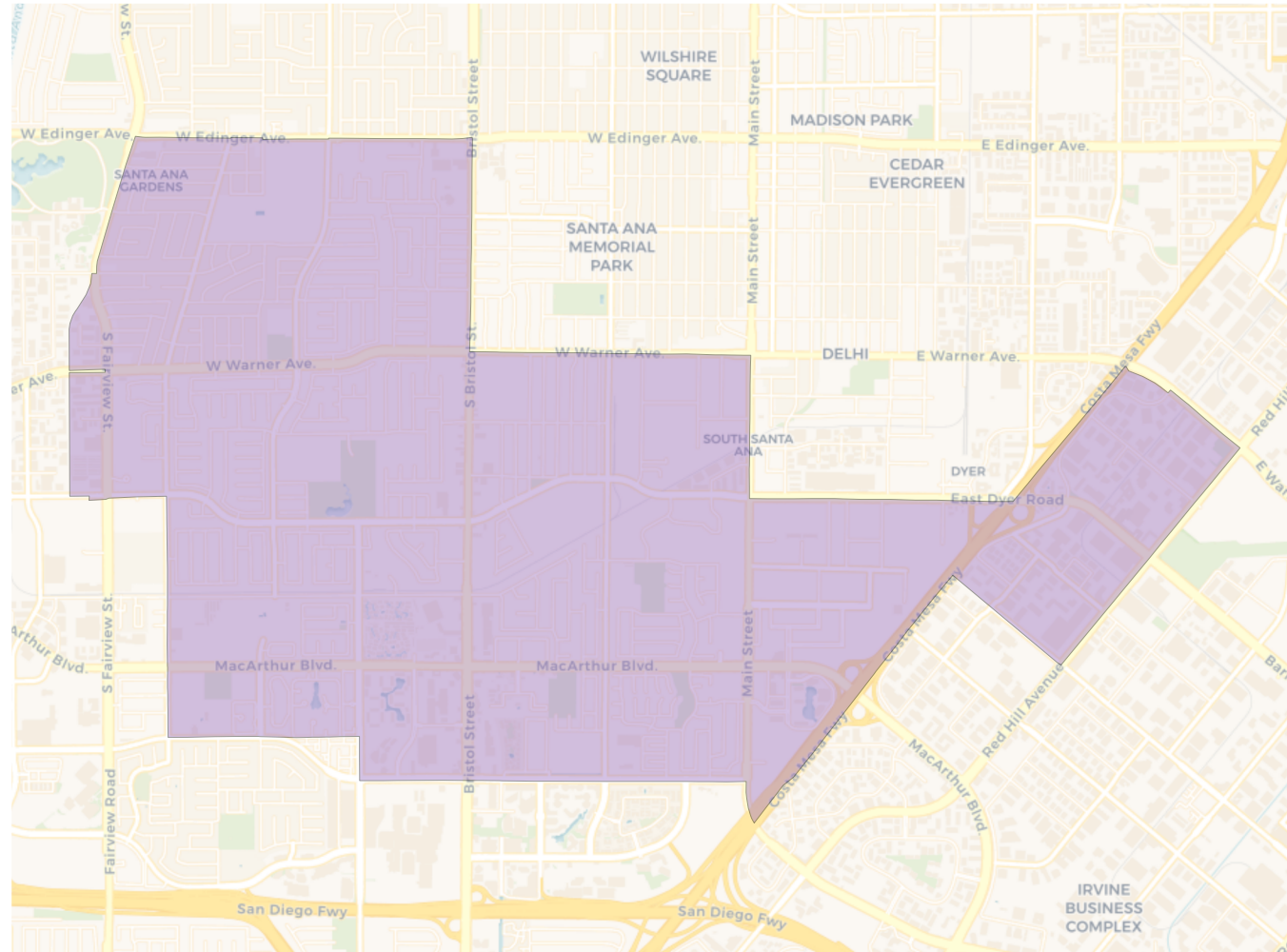


Citizen Voting Age Population

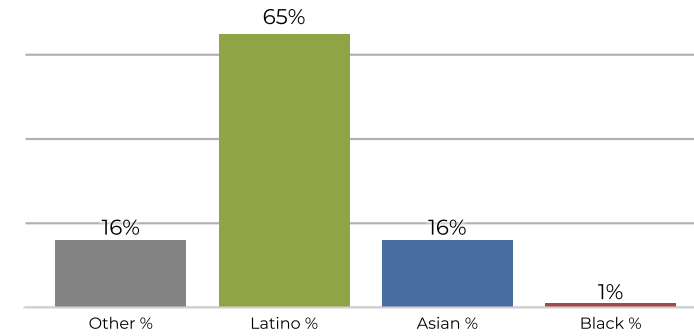


Population	Deviation	Deviation %	Other	Other %	Latino	Latino %	Asian	Asian %	Black	Black %
51,894	-48	-0.1%	11,240	21.7%	36,196	69.7%	3,718	7.2%	740	1.4%
Total CVAP	Other CVAP	Other CVAP %	Latino CVAP	Latino CVAP %	Asian CVAP	Asian CVAP %	Black CVAP	Black CVAP %		
26,897	9,863	36.7%	14,031	52.2%	2,295	8.5%	708	2.6%		

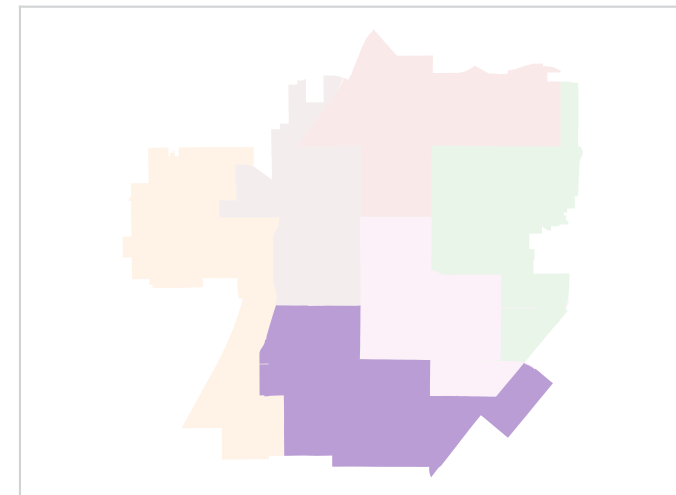
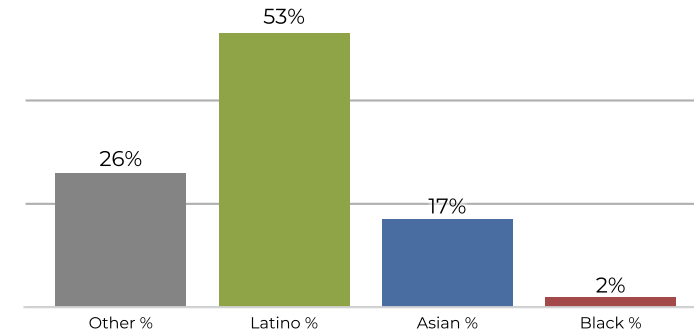
District 4



2020 Census

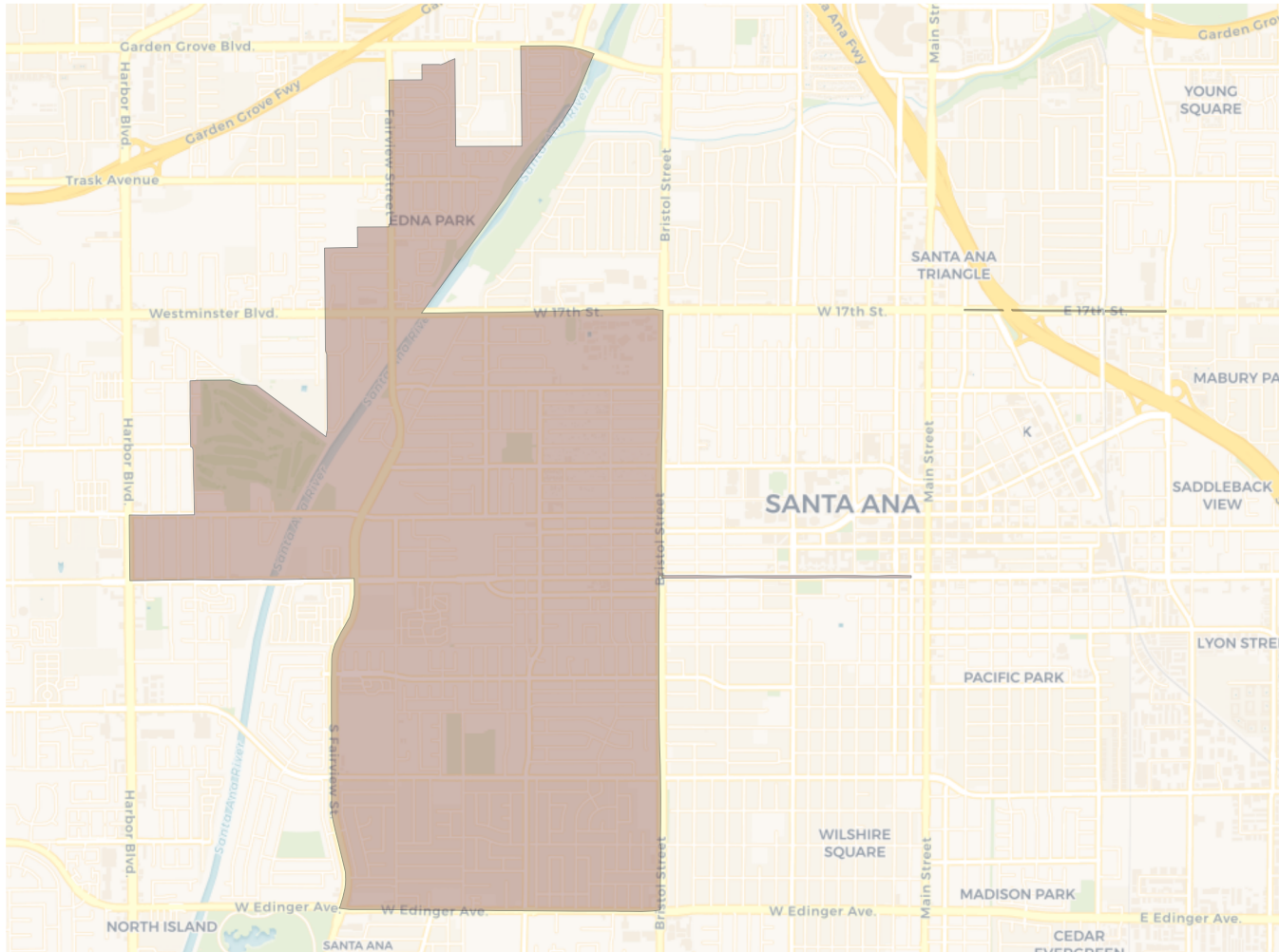


Citizen Voting Age Population

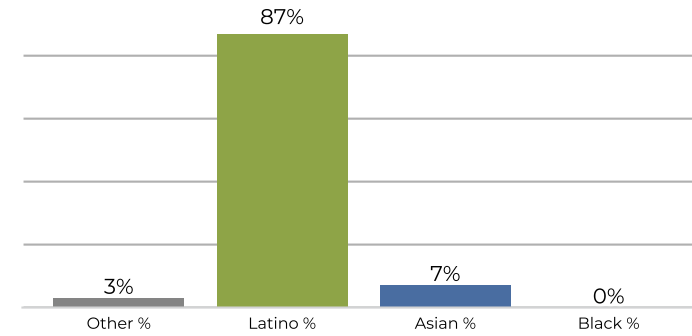


Population	Deviation	Deviation %	Other	Other %	Latino	Latino %	Asian	Asian %	Black	Black %
52,359	417	0.8%	8,753	16.7%	34,391	65.7%	8,458	16.2%	757	1.4%
Total CVAP	Other CVAP	Other CVAP %	Latino CVAP	Latino CVAP %	Asian CVAP	Asian CVAP %	Black CVAP	Black CVAP %		
32,031	8,502	26.5%	17,249	53.9%	5,512	17.2%	768	2.4%		

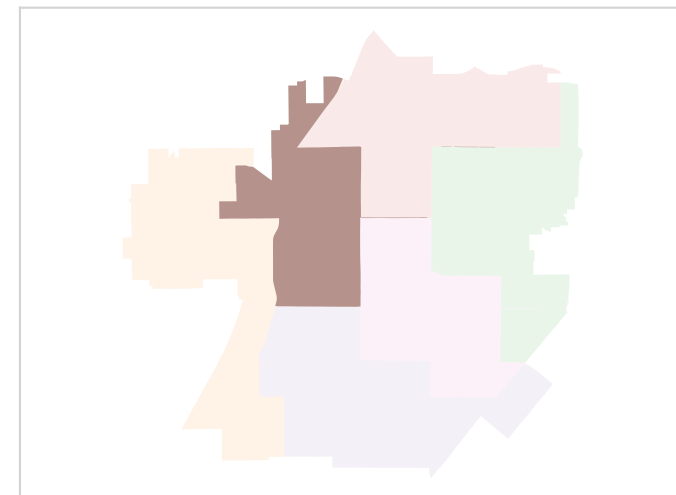
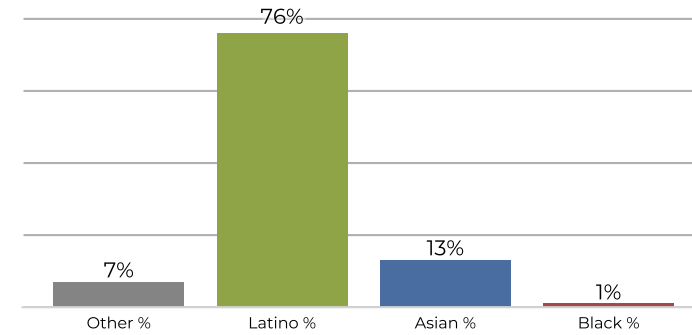
District 5



2020 Census

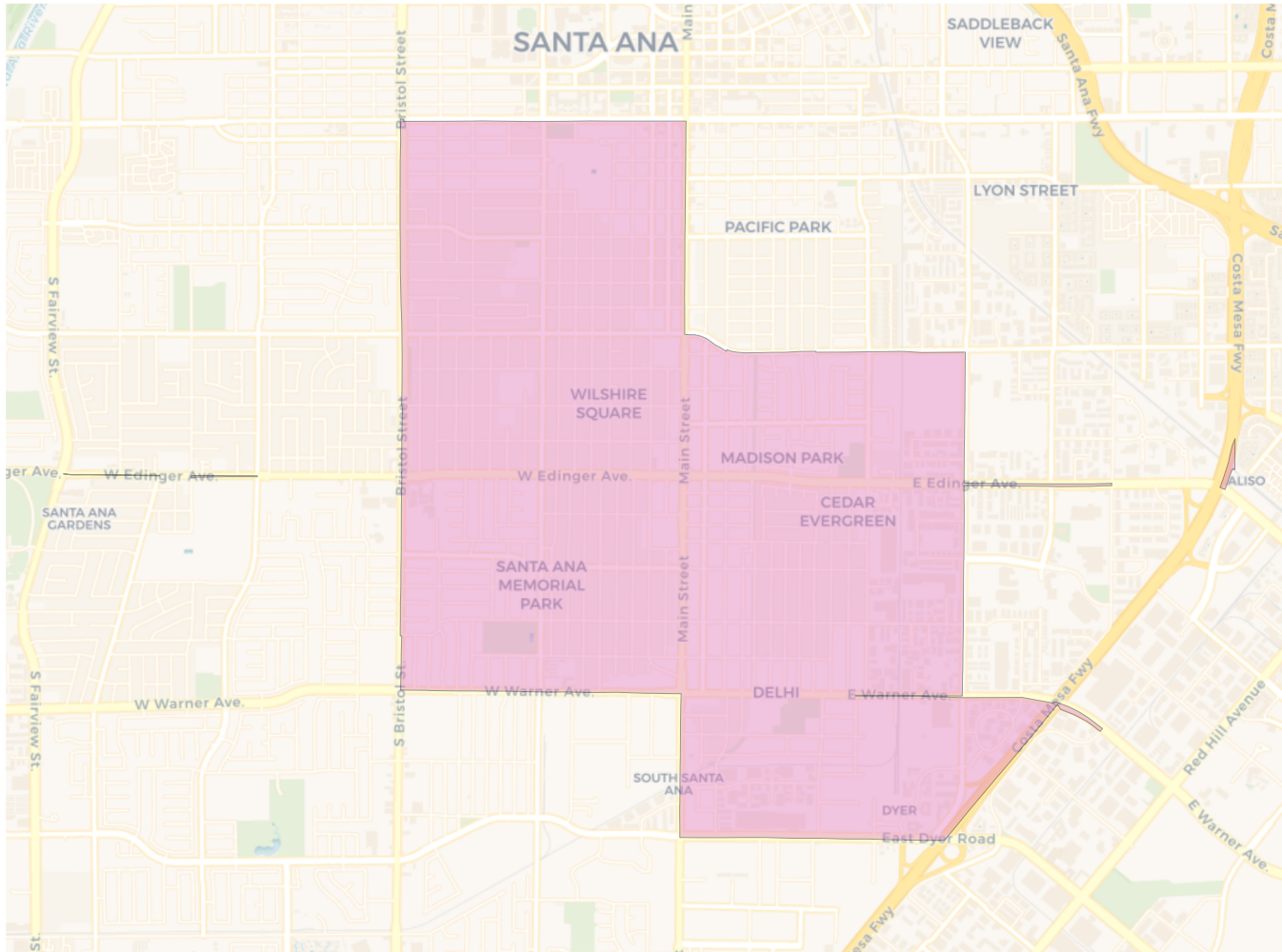


Citizen Voting Age Population

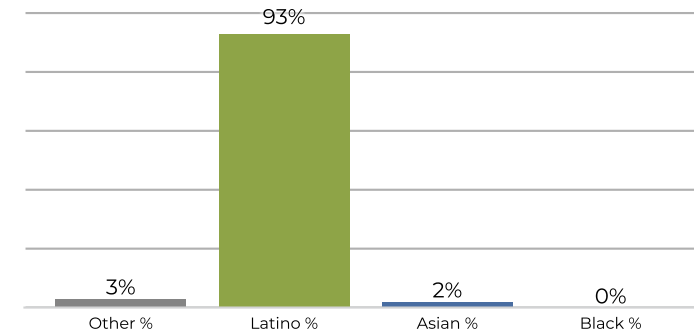


Population	Deviation	Deviation %	Other	Other %	Latino	Latino %	Asian	Asian %	Black	Black %
53,961	2,019	3.9%	2,015	3.7%	47,234	87.5%	4,231	7.8%	481	0.9%
Total CVAP	Other CVAP	Other CVAP %	Latino CVAP	Latino CVAP %	Asian CVAP	Asian CVAP %	Black CVAP	Black CVAP %		
22,634	1,719	7.6%	17,398	76.9%	3,110	13.7%	407	1.8%		

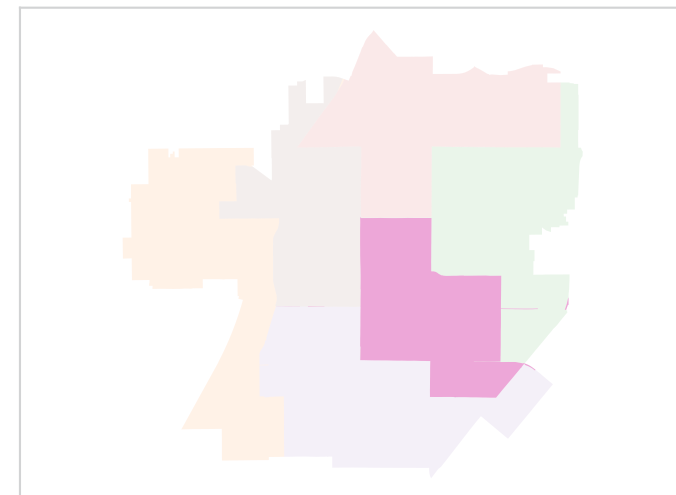
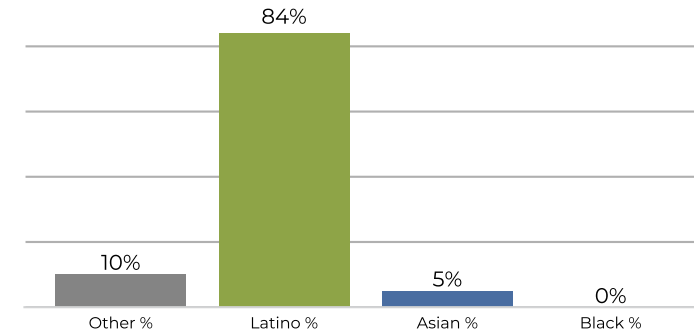
District 6



2020 Census



Citizen Voting Age Population



Population	Deviation	Deviation %	Other	Other %	Latino	Latino %	Asian	Asian %	Black	Black %
52,483	541	1.0%	2,046	3.9%	49,061	93.5%	1,273	2.4%	103	0.2%
Total CVAP	Other CVAP	Other CVAP %	Latino CVAP	Latino CVAP %	Asian CVAP	Asian CVAP %	Black CVAP	Black CVAP %		
23,719	2,418	10.2%	19,963	84.2%	1,293	5.5%	45	0.2%		