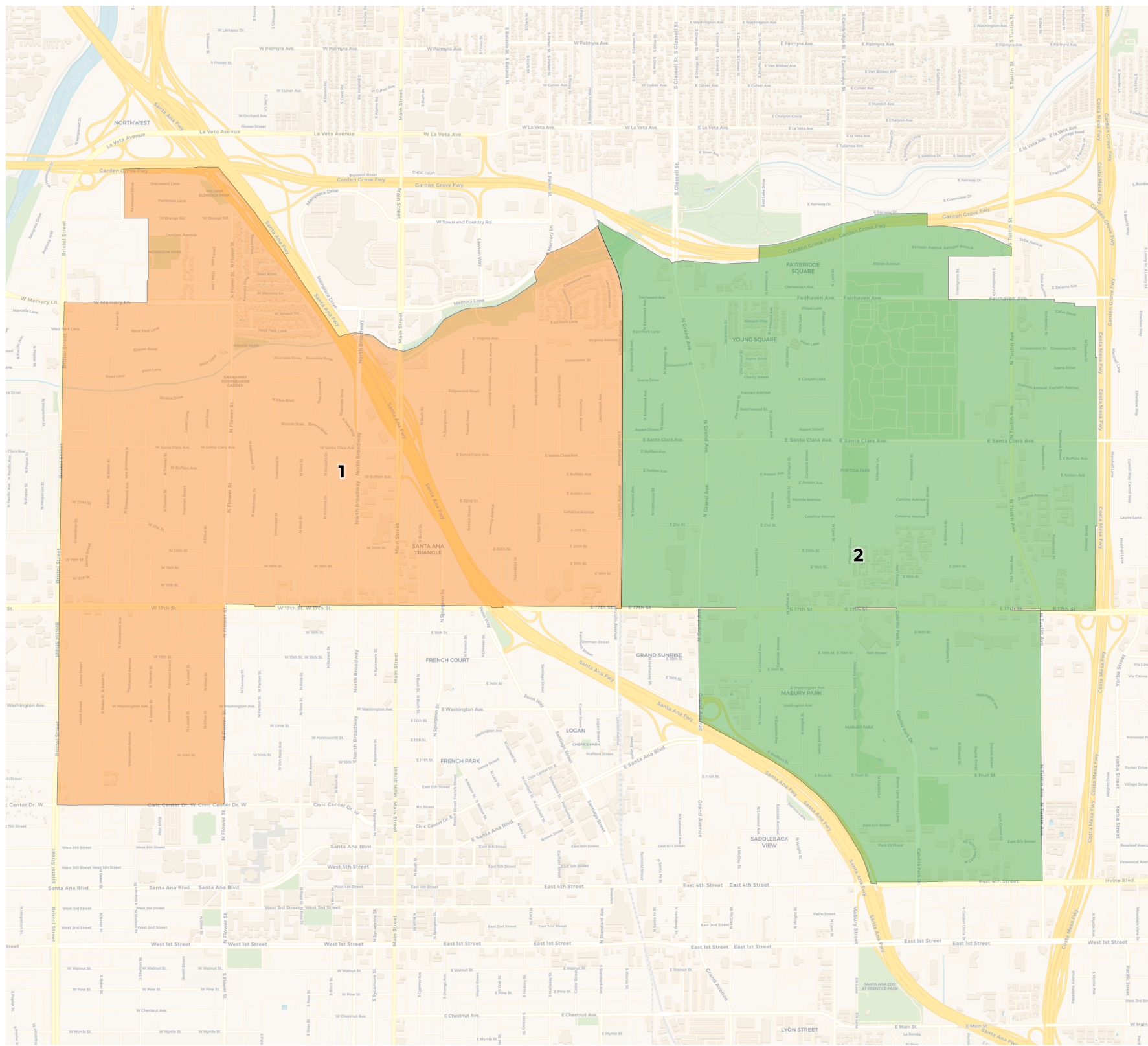


REDISTRICTING PARTNERS

City of Santa Ana
ID104009



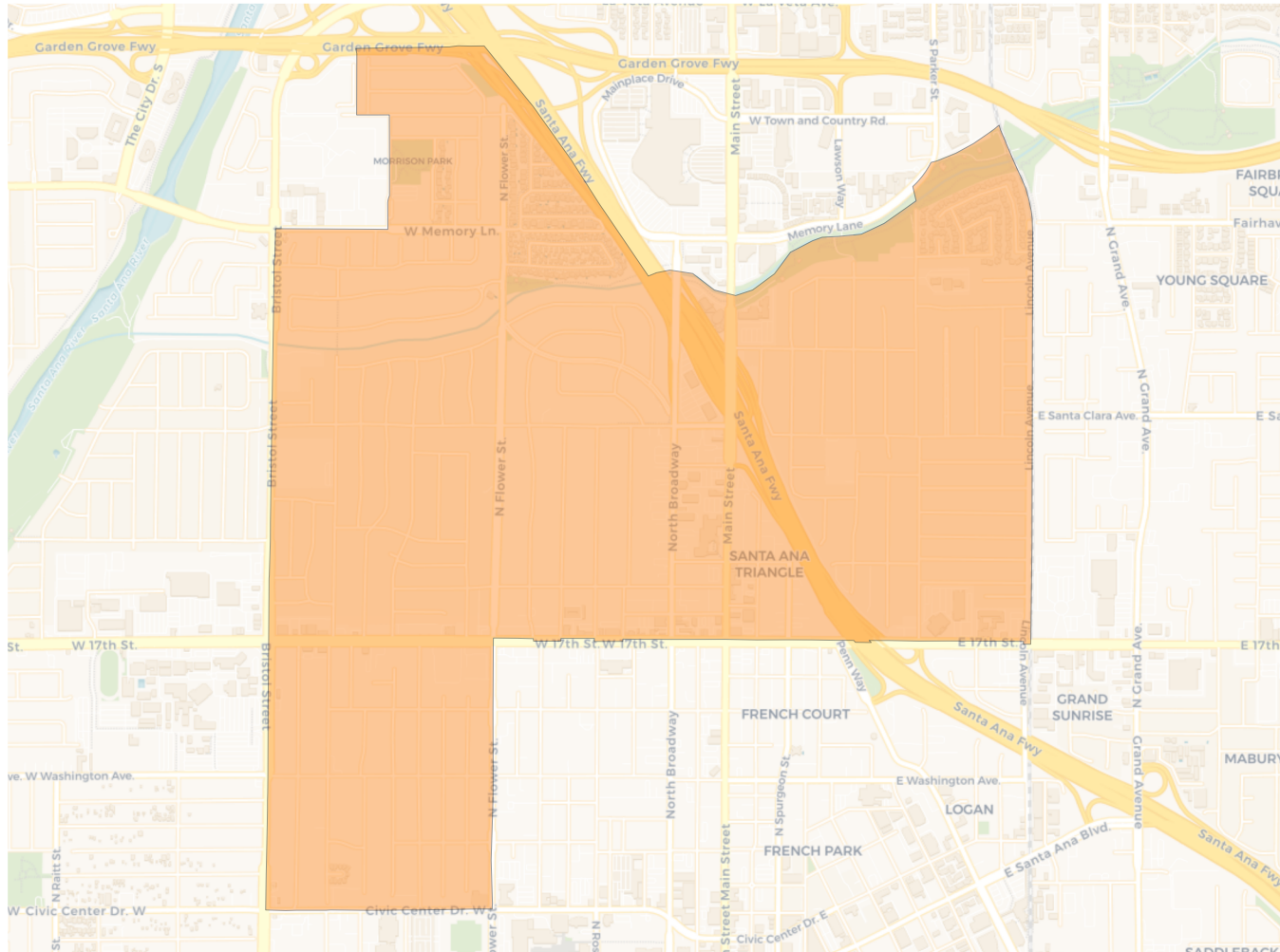
2020 Census

	1	2
Population	14,574	20,640
Deviation	-3,033	3,033
Deviation %	-17.2%	17.2%
Other	4,878	5,297
Other %	33.5%	25.7%
Latino	8,737	13,436
Latino %	59.9%	65.1%
Asian	820	1,602
Asian %	5.6%	7.8%
Black	139	305
Black %	1.0%	1.5%

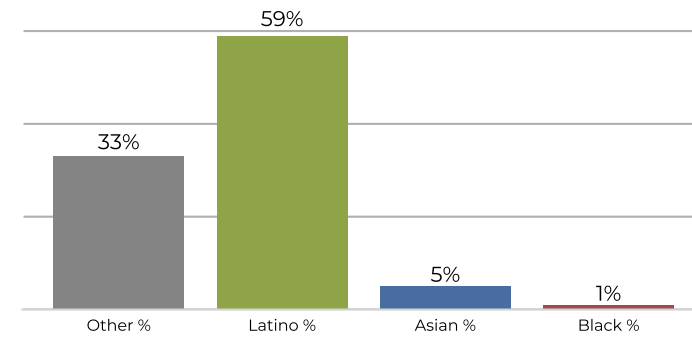
Citizen Voting Age Population (CVAP)

	1	2
Total CVAP	8,935	12,860
Other CVAP	3,801	5,761
Other CVAP %	42.5%	44.8%
Latino CVAP	4,182	5,568
Latino CVAP %	46.8%	43.3%
Asian CVAP	832	1,109
Asian CVAP %	9.3%	8.6%
Black CVAP	119	422
Black CVAP %	1.3%	3.3%

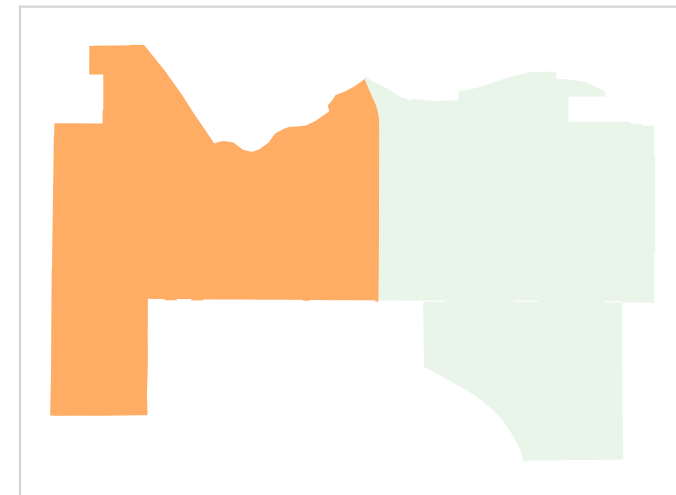
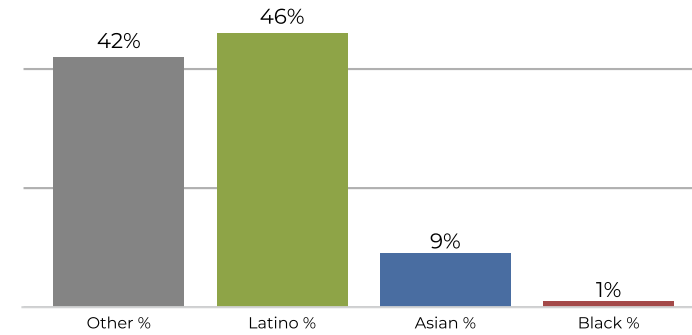
District 1



2020 Census

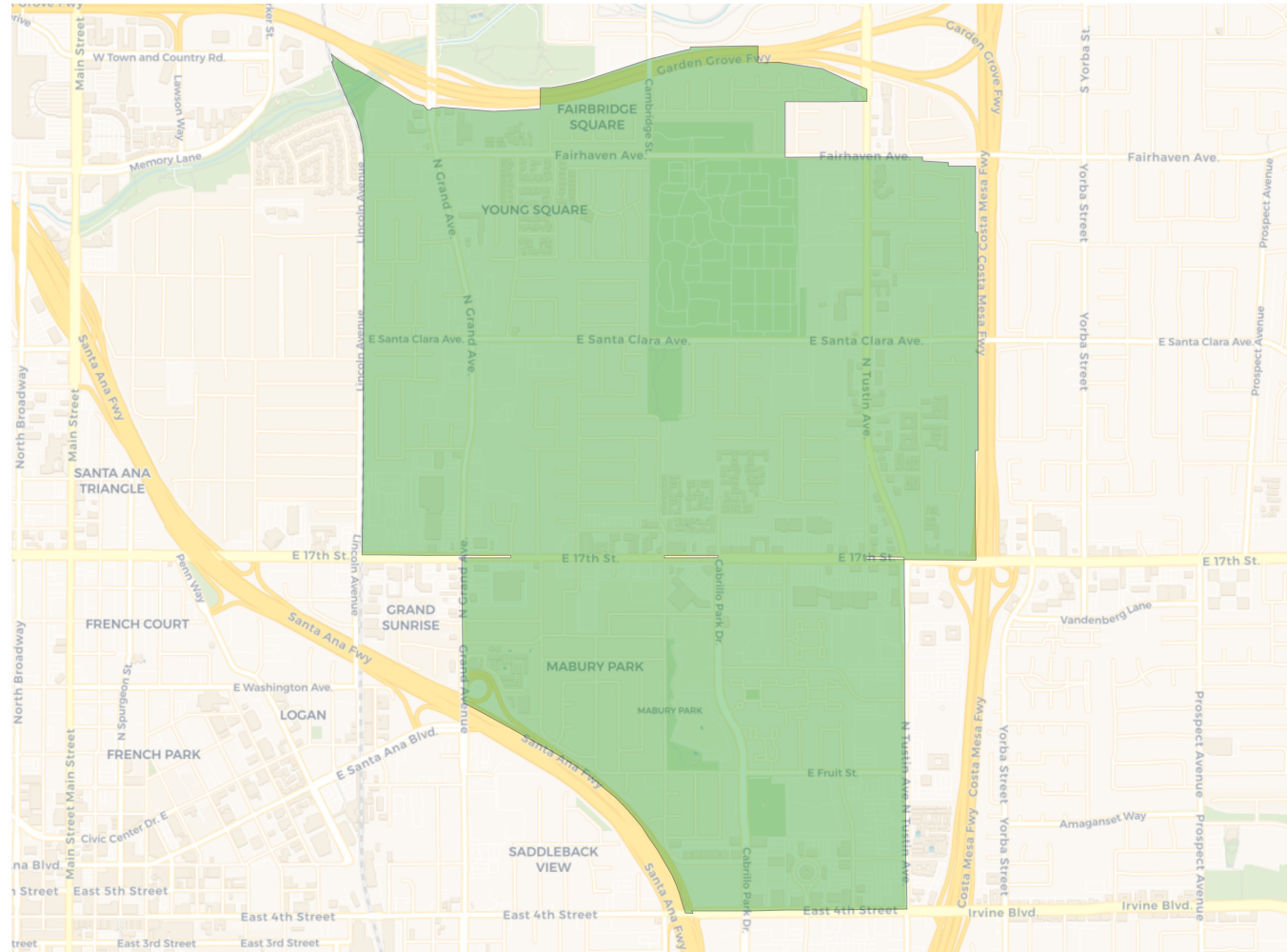


Citizen Voting Age Population

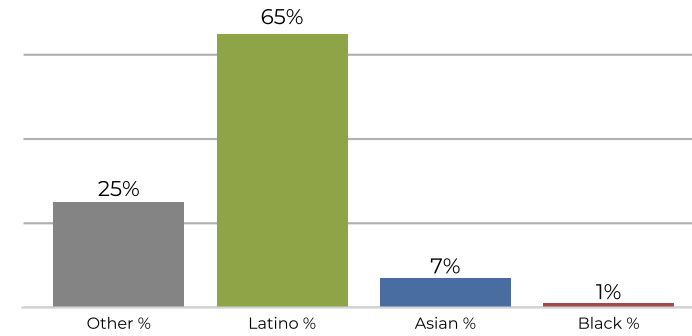


Population	Deviation	Deviation %	Other	Other %	Latino	Latino %	Asian	Asian %	Black	Black %
14,574	-3,033	-17.2%	4,878	33.5%	8,737	59.9%	820	5.6%	139	1.0%
Total CVAP	Other CVAP	Other CVAP %	Latino CVAP	Latino CVAP %	Asian CVAP	Asian CVAP %	Black CVAP	Black CVAP %		
8,935	3,801	42.5%	4,182	46.8%	832	9.3%	119	1.3%		

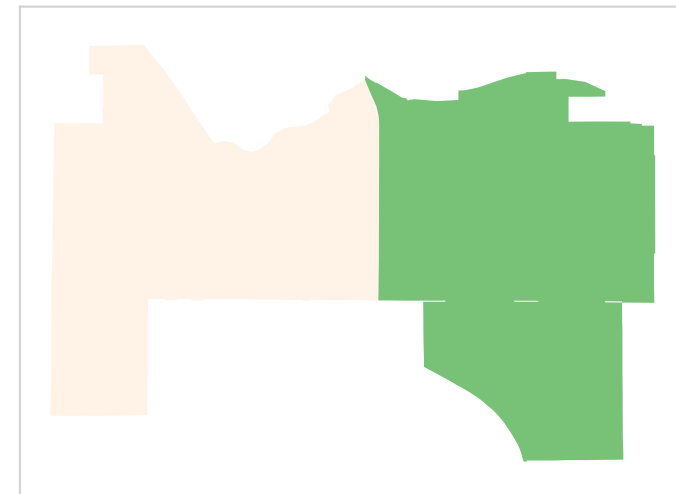
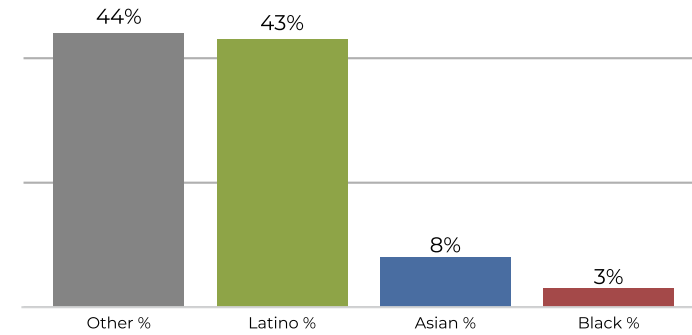
District 2



2020 Census



Citizen Voting Age Population



Population	Deviation	Deviation %	Other	Other %	Latino	Latino %	Asian	Asian %	Black	Black %
20,640	3,033	17.2%	5,297	25.7%	13,436	65.1%	1,602	7.8%	305	1.5%
Total CVAP	Other CVAP	Other CVAP %	Latino CVAP	Latino CVAP %	Asian CVAP	Asian CVAP %	Black CVAP	Black CVAP %		
12,860	5,761	44.8%	5,568	43.3%	1,109	8.6%	422	3.3%		